

CSMD1 RABBIT PAB

Cat.#: S220481

Product Name: Anti-CSMD1 Rabbit Polyclonal Antibody

Synonyms: PPP1R24

UNIPROT ID: Q96PZ7 (Gene Accession - NP_150094)

Background: CSMD1 CUB and Sushi multiple domains 1 is a protein that in humans is encoded by the CSMD1 gene. It is a potential tumour suppressor, the deletion of which may result in head and neck carcinomas behaving more aggressively. CSMD1 is part of the complement system that defends against pathogens through either the classical pathway or the alternative pathway. Located primarily in nerve growth cones, CSMD1 blocks the classical pathway of the immune system and is thought to be involved in tumor suppression, as defects in the gene encoding CSMD1 are associated with squamous cell carcinomas.

Immunogen: Synthetic peptide of human CSMD1

Applications: ELISA, IHC

Recommended Dilutions: IHC: 50-200; ELISA: 2000-5000

Host Species: Rabbit

Clonality: Rabbit Polyclonal

Isotype: Immunogen-specific rabbit IgG

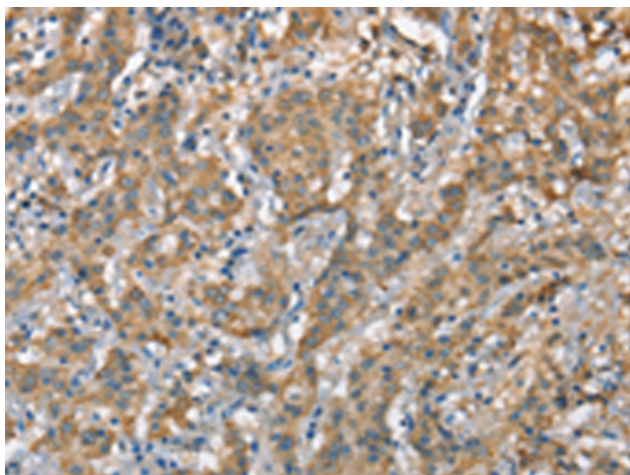
Purification: Antigen affinity purification

Species Reactivity: Human, Mouse

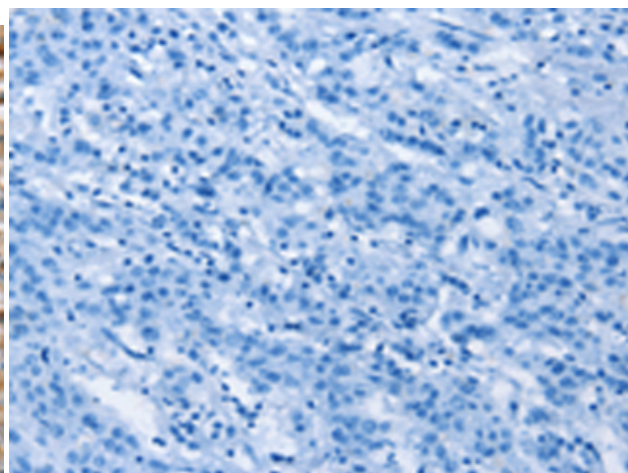
Constituents: PBS (without Mg²⁺ and Ca²⁺), pH 7.4, 150 mM NaCl, 0.05% Sodium Azide and 40% glycerol

Research Areas: Cancer

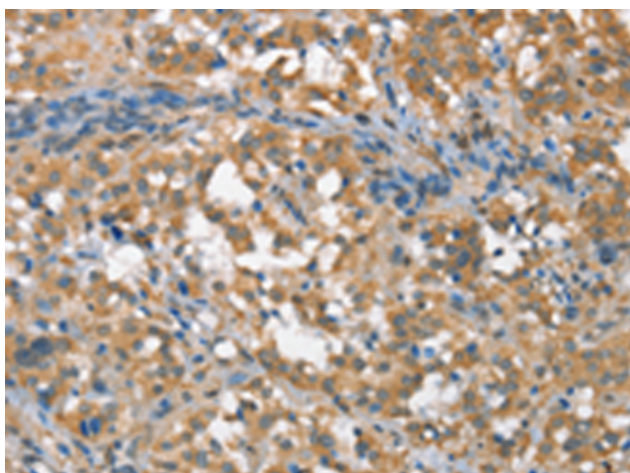
Storage & Shipping: Store at -20°C. Avoid repeated freezing and thawing



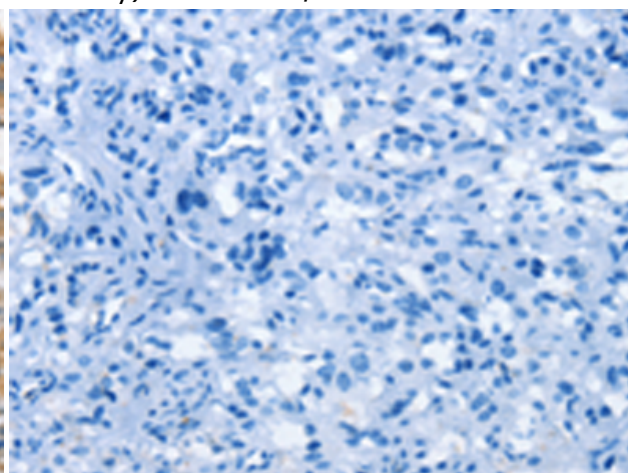
Immunohistochemistry analysis of paraffin embedded Human gastric cancer tissue using 220481 (CSMD1 Antibody) at a dilution of 1/40 (Cytoplasm).



In comparison with the IHC on the left, the same paraffin-embedded Human gastric cancer tissue is first treated with the synthetic peptide and then with 220481 (Anti-CSMD1 Antibody) at dilution 1/40.



The image on the left is immunohistochemistry of paraffin-embedded Human thyroid cancer tissue using 220481 (Anti-CSMD1 Antibody) at a dilution of 1/40.



In comparison with the IHC on the left, the same paraffin-embedded Human thyroid cancer tissue is first treated with synthetic peptide and then with D261590 (Anti-CSMD1 Antibody) at dilution 1/40.