

CSNK1A1 RABBIT PAB

Cat.#: S213430

Product Name: Anti-CSNK1A1 Rabbit Polyclonal Antibody

Synonyms: CK1; CK1a; CK1α; HLC DGPI; PRO2975; HEL-S-77p

UNIPROT ID: P48729 (Gene Accession - NP_001883)

Background: Enables protein serine/threonine kinase activity. Involved in several processes, including negative regulation of canonical Wnt signaling pathway; peptidyl-serine phosphorylation; and positive regulation of proteasomal ubiquitin-dependent protein catabolic process. Located in centrosome; cytosol; and nuclear speck. Part of beta-catenin destruction complex. Colocalizes with keratin filament and mRNA cleavage and polyadenylation specificity factor complex. Biomarker of Alzheimer's disease and inclusion body myositis.

Immunogen: Synthetic peptide of human CSNK1A1

Applications: ELISA, WB, IHC

Recommended Dilutions: IHC: 50-100;WB: 500-2000;ELISA: 5000-10000

Host Species: Rabbit

Clonality: Rabbit Polyclonal

Isotype: Immunogen-specific rabbit IgG

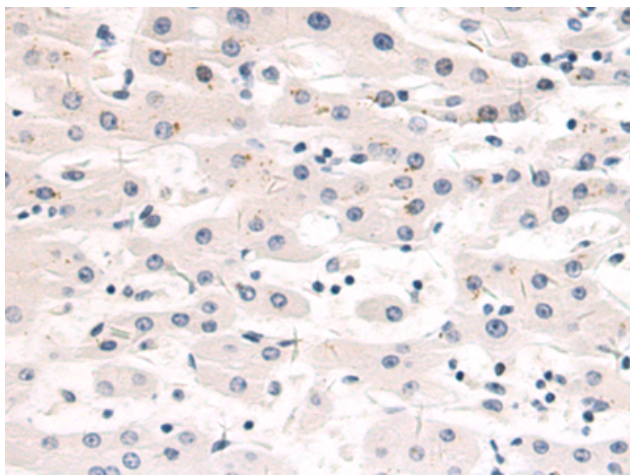
Purification: Antigen affinity purification

Species Reactivity: Human, Mouse

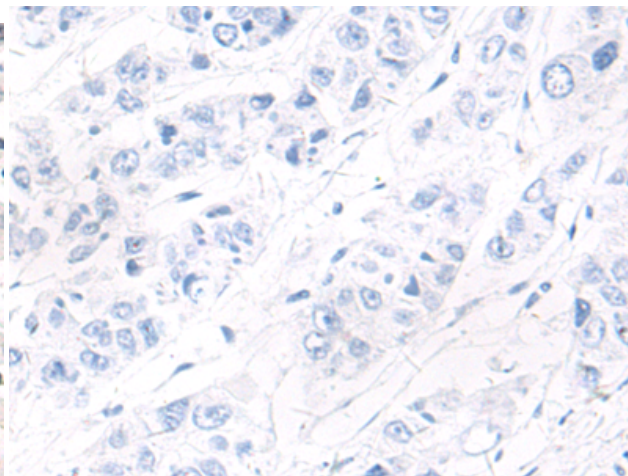
Constituents: PBS (without Mg²⁺ and Ca²⁺), pH 7.4, 150 mM NaCl, 0.05% Sodium Azide and 40% glycerol

Research Areas: Signal Transduction

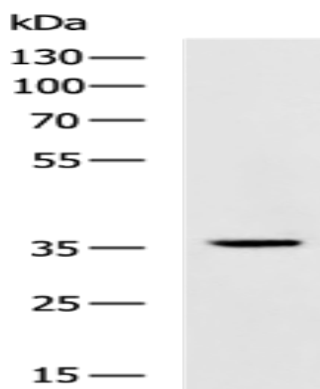
Storage & Shipping: Store at -20°C. Avoid repeated freezing and thawing



Immunohistochemistry analysis of paraffin embedded Human liver cancer tissue using 213430 (CSNK1A1 Antibody) at a dilution of 1/50 (Cytoplasm).



In comparison with the IHC on the left, the same paraffin-embedded Human liver cancer tissue is first treated with the synthetic peptide and then with 213430 (Anti-CSNK1A1 Antibody) at dilution 1/50.



Gel: 8% SDS-PAGE, Lysate: 40 μ g;
Lane: Mouse brain tissue lysate;
Primary antibody: 213430 (CSNK1A1 Antibody) at dilution 1/800;
Secondary antibody: HRP-conjugated Goat anti rabbit IgG at 1/5000 dilution;
Exposure time: 30 seconds