

## CSNK1D RABBIT PAB

**Cat.#:** S217310

**Product Name:** Anti-CSNK1D Rabbit Polyclonal Antibody

**Synonyms:** ASPS; HCKID; FASPS2; CKIdelta

**UNIPROT ID:** P48730 (Gene Accession - BC003558 )

**Background:** This gene is a member of the casein kinase I (CKI) gene family whose members have been implicated in the control of cytoplasmic and nuclear processes, including DNA replication and repair. The encoded protein is highly similar to the mouse and rat CKI delta homologs. Two transcript variants encoding different isoforms have been found for this gene

**Immunogen:** Fusion protein of human CSNK1D

**Applications:** ELISA, WB, IHC

**Recommended Dilutions:** IHC: 50-200;WB: 200-1000;ELISA: 1000-2000

**Host Species:** Rabbit

**Clonality:** Rabbit Polyclonal

**Isotype:** Immunogen-specific rabbit IgG

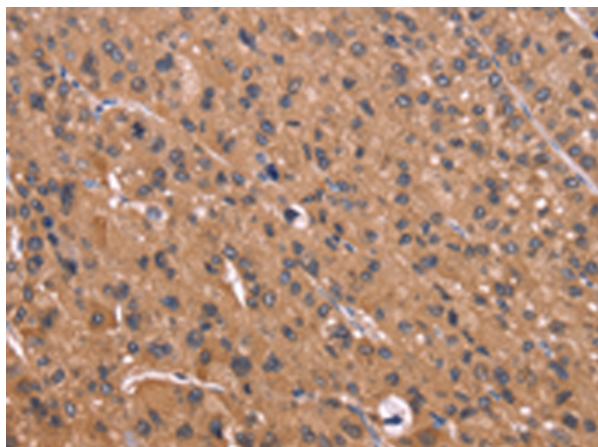
**Purification:** Antigen affinity purification

**Species Reactivity:** Human, Mouse, Rat

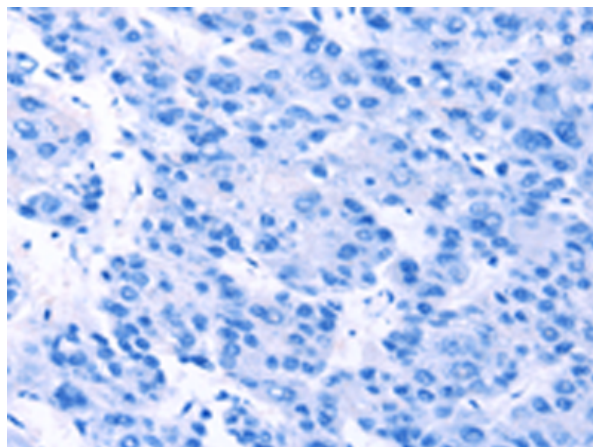
**Constituents:** PBS (without Mg<sup>2+</sup> and Ca<sup>2+</sup>), pH 7.4, 150 mM NaCl, 0.05% Sodium Azide and 40% glycerol

**Research Areas:** Cancer, Neuroscience, Signal Transduction

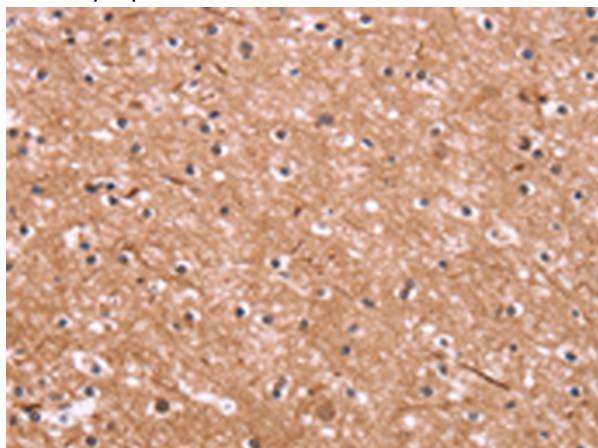
**Storage & Shipping:** Store at -20°C. Avoid repeated freezing and thawing



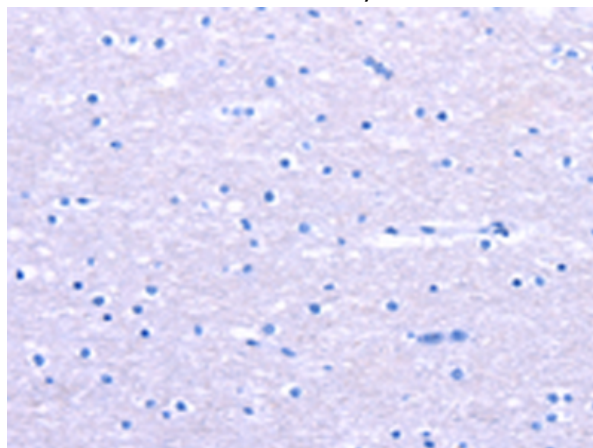
Immunohistochemistry analysis of paraffin embedded Human liver cancer tissue using 217310(CSNK1D Antibody) at a dilution of 1/50(Cytoplasm).



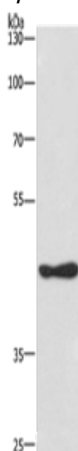
In comparison with the IHC on the left, the same paraffin-embedded Human liver cancer tissue is first treated with the fusion protein and then with 217310(Anti-CSNK1D Antibody) at dilution 1/50.



The image on the left is immunohistochemistry of paraffin-embedded Human brain tissue using 217310(Anti-CSNK1D Antibody) at a dilution of 1/50.



In comparison with the IHC on the left, the same paraffin-embedded Human brain tissue is first treated with fusion protein and then with D222155(Anti-CSNK1D Antibody) at dilution 1/50.



Gel: 8%SDS-PAGE, Lysate: 40 µg;  
Lane: 293T cells;  
Primary antibody: 217310(CSNK1D Antibody) at dilution 1/270;  
Secondary antibody: Goat anti rabbit IgG at 1/8000 dilution;  
Exposure time: 5 minutes



# Product Description

Pioneering GTPase and Oncogene Product Development since 2010

---