

## CSRP2 RABBIT PAB

**Cat.#:** S219243

**Product Name:** Anti-CSRP2 Rabbit Polyclonal Antibody

**Synonyms:** CRP2; LMO5; SmLIM

**UNIPROT ID:** Q16527 (Gene Accession - BC000992 )

**Background:** CSRP2 is a member of the CSRP family of genes, encoding a group of LIM domain proteins, which may be involved in regulatory processes important for development and cellular differentiation. CRP2 contains two copies of the cysteine-rich amino acid sequence motif (LIM) with putative zinc-binding activity, and may be involved in regulating ordered cell growth. Other genes in the family include CSRP1 and CSRP3. Alternative splicing results in multiple transcript variants.

**Immunogen:** Fusion protein of human CSRP2

**Applications:** ELISA, WB, IHC

**Recommended Dilutions:** IHC: 50-200;WB: 1000-5000;ELISA: 5000-10000

**Host Species:** Rabbit

**Clonality:** Rabbit Polyclonal

**Isotype:** Immunogen-specific rabbit IgG

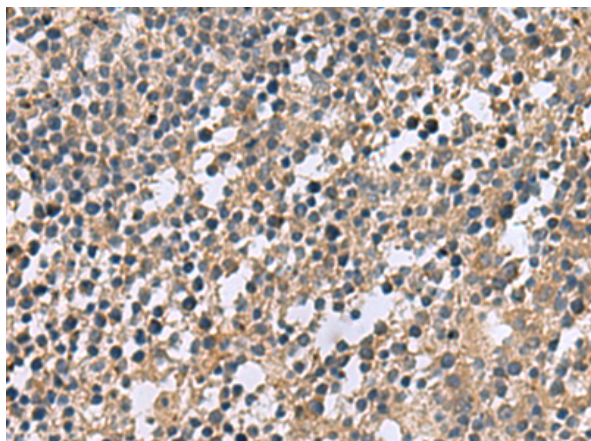
**Purification:** Antigen affinity purification

**Species Reactivity:** Human, Mouse, Rat

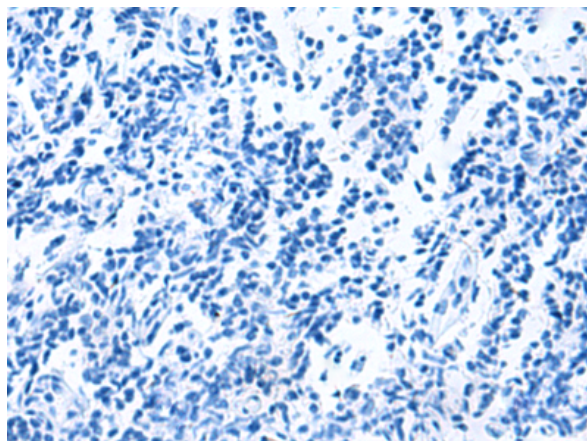
**Constituents:** PBS (without Mg<sup>2+</sup> and Ca<sup>2+</sup>), pH 7.4, 150 mM NaCl, 0.05% Sodium Azide and 40% glycerol

**Research Areas:** Epigenetics and Nuclear Signaling

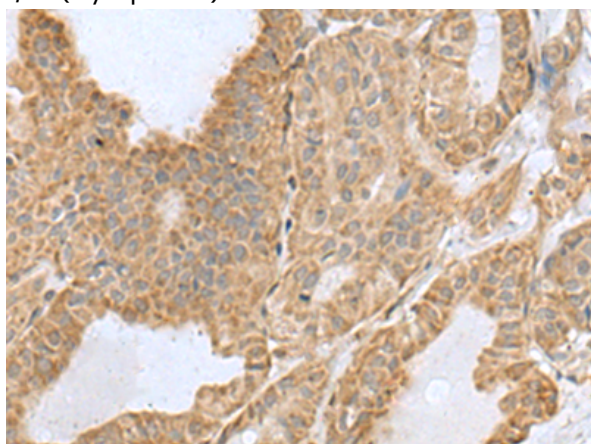
**Storage & Shipping:** Store at -20°C. Avoid repeated freezing and thawing



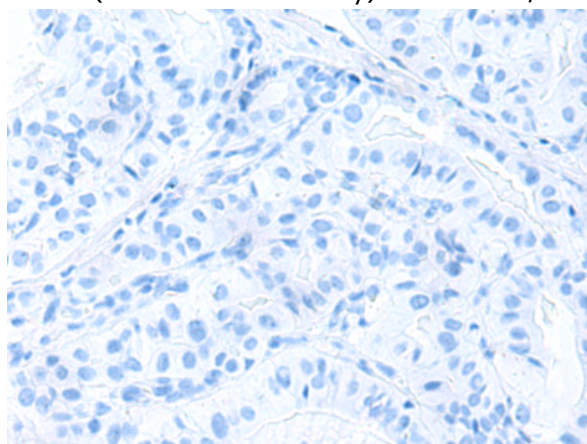
Immunohistochemistry analysis of paraffin embedded Human tonsil tissue using 219243(CSRP2 Antibody) at a dilution of 1/60(Cytoplasm).



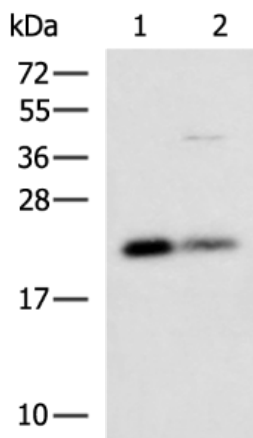
In comparison with the IHC on the left, the same paraffin-embedded Human tonsil tissue is first treated with the fusion protein and then with 219243(Anti-CSRP2 Antibody) at dilution 1/60.



The image on the left is immunohistochemistry of paraffin-embedded Human thyroid cancer tissue using 219243(Anti-CSRP2 Antibody) at a dilution of 1/60.



In comparison with the IHC on the left, the same paraffin-embedded Human thyroid cancer tissue is first treated with fusion protein and then with D226118(Anti-CSRP2 Antibody) at dilution 1/60.



Gel: 12%SDS-PAGE, Lysate: 40 µg;  
 Lane 1-2: HepG2 and A549 cell lysates;  
 Primary antibody: 219243(CSRP2 Antibody) at dilution 1/900;  
 Secondary antibody: HRP-conjugated Goat anti rabbit IgG at 1/5000 dilution;  
 Exposure time: 10 seconds



# Product Description

Pioneering GTPase and Oncogene Product Development since 2010

---