

## CTAG1A RABBIT PAB

**Cat.#:** S220482

**Product Name:** Anti-CTAG1A Rabbit Polyclonal Antibody

**Synonyms:** ESO1; CT6.1; LAGE-2; LAGE2A; NY-ESO-1

**UNIPROT ID:** P78358 (Gene Accession - NP\_640343 )

**Background:** The protein encoded by this gene is a tumor cell antigen found in various types of cancers, which makes it a good candidate for a cancer vaccine. This gene is also highly expressed in normal ovary and testis tissues. An identical copy of this gene is found on the same chromosome.

**Immunogen:** Synthetic peptide of human CTAG1A

**Applications:** ELISA, IHC

**Recommended Dilutions:** IHC: 50-200; ELISA: 5000-10000

**Host Species:** Rabbit

**Clonality:** Rabbit Polyclonal

**Isotype:** Immunogen-specific rabbit IgG

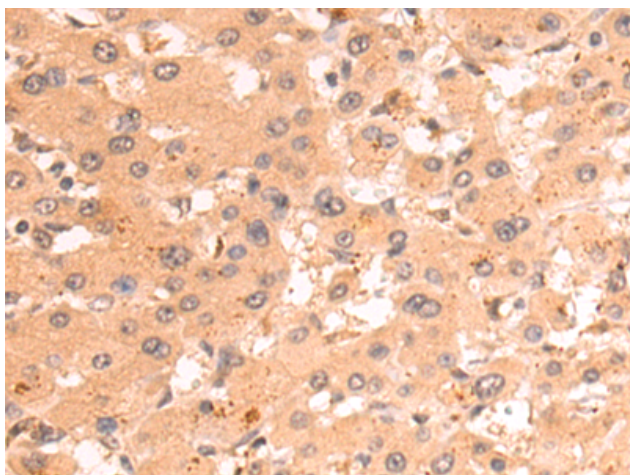
**Purification:** Antigen affinity purification

**Species Reactivity:** Human

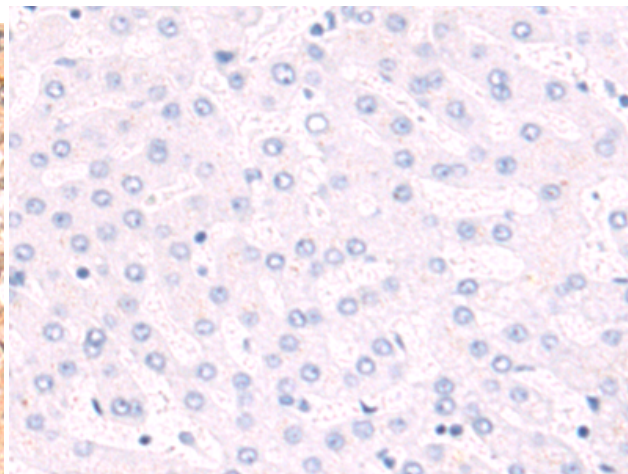
**Constituents:** PBS (without Mg<sup>2+</sup> and Ca<sup>2+</sup>), pH 7.4, 150 mM NaCl, 0.05% Sodium Azide and 40% glycerol

**Research Areas:** Tags & Cell Markers, Cancer

**Storage & Shipping:** Store at -20°C. Avoid repeated freezing and thawing



Immunohistochemistry analysis of paraffin embedded Human liver cancer tissue using 220482(CTAG1A Antibody) at a dilution of 1/50(Cytoplasm).



In comparison with the IHC on the left, the same paraffin-embedded Human liver cancer tissue is first treated with the synthetic peptide and then with 220482(Anti-CTAG1A Antibody) at dilution 1/50.