

CTBP1 RABBIT MAB

Cat.#: N263285

Product Name: Anti-CTBP1 Rabbit Monoclonal Antibody

Synonyms: CTBP1; CTBP; C-terminal-binding protein 1; CtBP1

UNIPROT ID: Q13363

Background: Involved in controlling the equilibrium between tubular and stacked structures in the Golgi complex. Functions in brown adipose tissue (BAT) differentiation. Corepressor targeting diverse transcription regulators such as GLIS2. Has dehydrogenase activity.

Immunogen: A synthetic peptide of human CtBP1

Applications: WB,IHC-F,IHC-P,ICC/IF,IP

Recommended Dilutions: WB: 1/500-1/1000 IHC: 1/50-1/100 IF: 1/50-1/200 IP: 1/20

Host Species: Rabbit

Clonality: Rabbit Monoclonal

Clone ID: R06-4A3

MW: Calculated MW: 48 kDa; Observed MW: 48 kDa

Isotype: IgG

Purification: Affinity Purified

Species Reactivity: Human

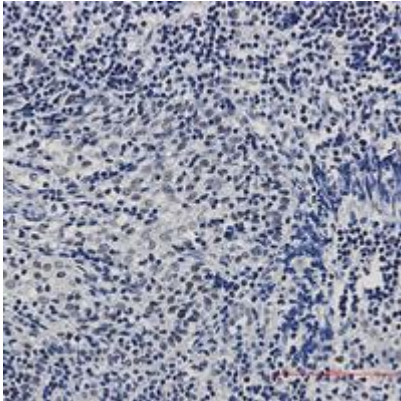
Conjugation: Unconjugated

Modification: Unmodified

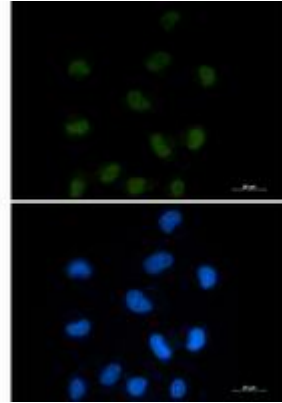
Constituents: PBS (without Mg²⁺ and Ca²⁺), pH 7.3 containing 50% glycerol, 0.5% BSA and 0.02% sodium azide

Research Areas: Cell Biology

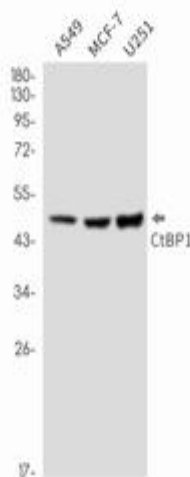
Storage & Shipping: Store at -20°C. Avoid repeated freezing and thawing



Immunohistochemistry analysis of paraffin-embedded Human tonsil using CtBP1 antibody. High-pressure and temperature Sodium Citrate pH 6.0 was used for antigen retrieval.



Immunocytochemistry analysis of CTBP1 (green) in HEPG2 using CTBP1 antibody, and DAPI (blue).



Western blot analysis of CtBP1 in A549, MCF-7, U251 lysates using CtBP1 antibody.