

## CTBP2 RABBIT MAB

**Cat.#:** N263286

**Product Name:** Anti-CTBP2 Rabbit Monoclonal Antibody

**Synonyms:** C-terminal-binding protein 2

**UNIPROT ID:** P56545

**Background:** This gene produces alternative transcripts encoding two distinct proteins. One protein is a transcriptional repressor, while the other isoform is a major component of specialized synapses known as synaptic ribbons. Both proteins contain a NAD<sup>+</sup> binding domain similar to NAD<sup>+</sup>-dependent 2-hydroxyacid dehydrogenases. A portion of the 3' untranslated region was used to map this gene to chromosome 21q21.3; however, it was noted that similar loci elsewhere in the genome are likely. Blast analysis shows that this gene is present on chromosome 10. Several transcript variants encoding two different isoforms have been found for this gene. [provided by RefSeq, Feb 2014]

**Immunogen:** A synthetic peptide of human CTBP2

**Applications:** WB,IHC-F,IHC-P,ICC/IF

**Recommended Dilutions:** WB: 1/500-1/1000 IHC: 1/50-1/100 IF: 1/50-1/200

**Host Species:** Rabbit

**Clonality:** Rabbit Monoclonal

**Clone ID:** R02-7A0

**MW:** Calculated MW: 49 kDa; Observed MW: 49 kDa

**Isotype:** IgG

**Purification:** Affinity Purified

**Species Reactivity:** Human,Mouse,Rat

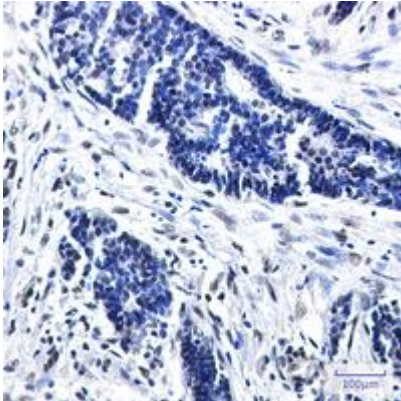
**Conjugation:** Unconjugated

**Modification:** Unmodified

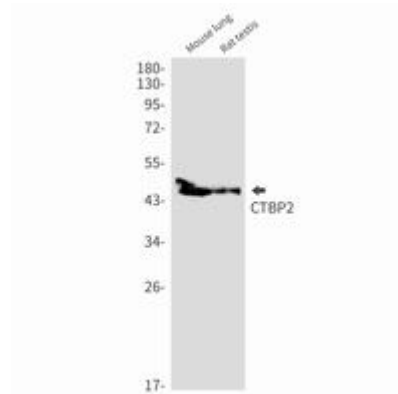
**Constituents:** PBS (without Mg<sup>2+</sup> and Ca<sup>2+</sup>), pH 7.3 containing 50% glycerol, 0.5% BSA and 0.02% sodium azide

**Research Areas:** Microbiology

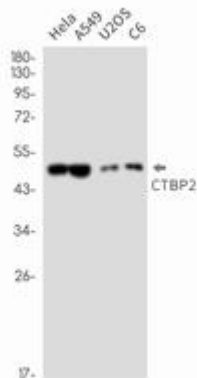
**Storage & Shipping:** Store at -20°C. Avoid repeated freezing and thawing



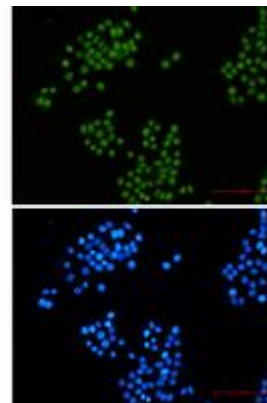
Immunohistochemistry analysis of paraffin-embedded Human breast cancer using CTBP2 antibody. High-pressure and temperature Sodium Citrate pH 6.0 was used for antigen retrieval.



Western blot analysis of CTBP2 in mouse lung, rat testis lysates using CTBP2 antibody.



Western blot analysis of CTBP2 in HeLa, A549, U2OS, C6 lysates using CTBP2 antibody.



Immunocytochemistry analysis of CTBP2 (green) in HeLa using CTBP2 antibody, and DAPI (blue).