

## CTCF RABBIT MAB

**Cat.#:** N262073

**Product Name:** Anti-CTCF Rabbit Monoclonal Antibody

**Synonyms:** CTCF; Transcriptional repressor CTCF; 11-zinc finger protein; CCCTC-binding factor; CTCFL paralog

**UNIPROT ID:** P49711

**Background:** Plays an important role in chromatin remodeling. Can dimerize when it is bound to different DNA sequences, mediating long-range chromatin looping. Mediates interchromosomal association between IGF2/H19 and WS1/NF1 and may direct distant DNA segments to a common transcription factory.

**Immunogen:** A synthetic peptide of human CTCF

**Applications:** WB,IHC-F,IHC-P,ICC/IF

**Recommended Dilutions:** WB: 1/500-1/1000 IHC: 1/50-1/100 IF: 1/50-1/200

**Host Species:** Rabbit

**Clonality:** Rabbit Monoclonal

**Clone ID:** R02-3J9

**MW:** Calculated MW: 83 kDa; Observed MW: 140 kDa

**Isotype:** IgG

**Purification:** Affinity Purified

**Species Reactivity:** Human,Mouse,Rat

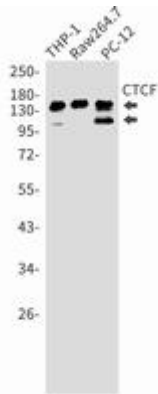
**Conjugation:** Unconjugated

**Modification:** Unmodified

**Constituents:** PBS (without Mg<sup>2+</sup> and Ca<sup>2+</sup>), pH 7.3 containing 50% glycerol, 0.5% BSA and 0.02% sodium azide

**Research Areas:** Epigenetics and Nuclear Signaling

**Storage & Shipping:** Store at -20°C. Avoid repeated freezing and thawing



Western blot analysis of CTCF in THP-1, Raw264.7, PC-12 lysates using CTCF antibody.