

CTGF RABBIT MAB

Cat.#: N262074

Product Name: Anti-CTGF Rabbit Monoclonal Antibody

Synonyms: CCN2; NOV2; HCS24; IGFBP8

UNIPROT ID: P29279

Background: Major connective tissue mitogen secreted by vascular endothelial cells. Promotes proliferation and differentiation of chondrocytes. Mediates heparin- and divalent cation-dependent cell adhesion in many cell types including fibroblasts, myofibroblasts, endothelial and epithelial cells. Enhances fibroblast growth factor-induced DNA synthesis.

Immunogen: Recombinant protein of human CTGF

Applications: WB,IP

Recommended Dilutions: WB: 1/500-1/1000 IP: 1/20

Host Species: Rabbit

Clonality: Rabbit Monoclonal

Clone ID: R08-8C2

MW: Calculated MW: 38 kDa; Observed MW: 35 kDa

Isotype: IgG

Purification: Affinity Purified

Species Reactivity: Human,Rat

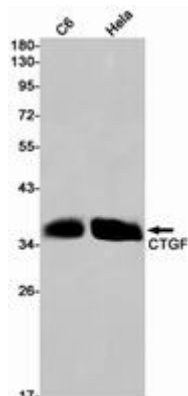
Conjugation: Unconjugated

Modification: Unmodified

Constituents: PBS (without Mg²⁺ and Ca²⁺), pH 7.3 containing 50% glycerol, 0.5% BSA and 0.02% sodium azide

Research Areas: Cardiovascular

Storage & Shipping: Store at -20°C. Avoid repeated freezing and thawing



Western blot analysis of CTGF in C6, HeLa lysates using CTGF antibody.



Product Description

Pioneering GTPase and Oncogene Product Development since 2010
