

CTNNAL1 RABBIT PAB

Cat.#: S210192

Product Name: Anti-CTNNAL1 Rabbit Polyclonal Antibody

Synonyms: ACRP; CLLP; alpha-CATU

UNIPROT ID: Q9UBT7 (Gene Accession - BC117208)

Background: CTNNAL1 (catenin (cadherin-associated protein), alpha-like 1), also known as CLLP or alpha-CATU, is a 734 amino acid cytoplasmic peripheral membrane protein belonging to the vinculin/alpha-catenin family. Expressed at high levels in adrenal gland and present at lower levels in neural tissues, CTNNAL1 may be involved in the regulation of Rho pathway signaling by providing a scaffold for the Lbc Rho guanine nucleotide exchange factor 1 (RhoGEF p15). It is suggested that CTNNAL1 is down-regulated in pancreatic carcinoma undergoing differentiation and apoptosis. Existing as three isoforms produced by alternative splicing events, CTNNAL1 may contribute to the wound repair and proliferation of human bronchial epithelial cells (HBEC).

Immunogen: Fusion protein of human CTNNAL1

Applications: ELISA, IHC

Recommended Dilutions: IHC: 30-150; ELISA: 5000-10000

Host Species: Rabbit

Clonality: Rabbit Polyclonal

Isotype: Immunogen-specific rabbit IgG

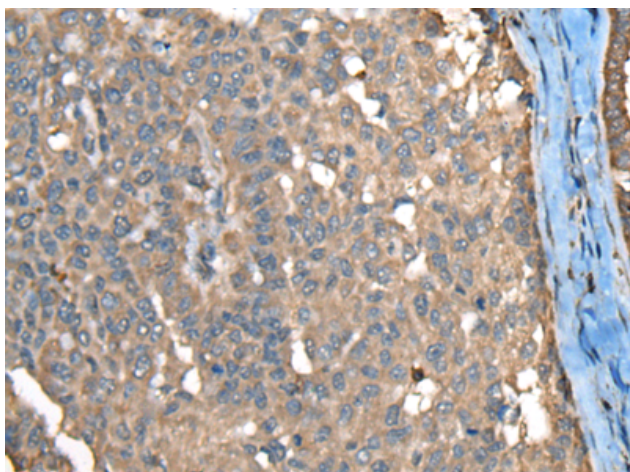
Purification: Antigen affinity purification

Species Reactivity: Human, Mouse

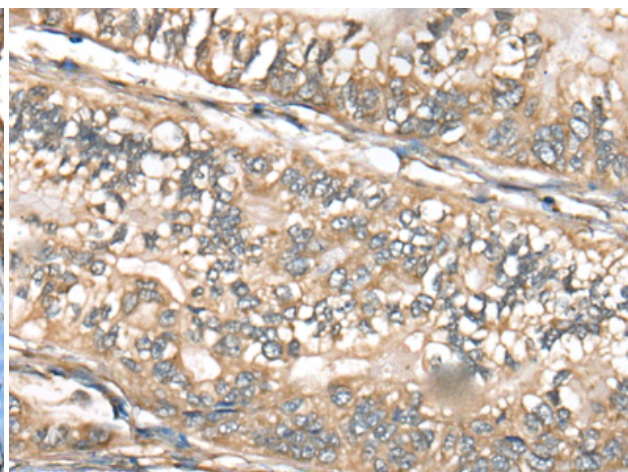
Constituents: PBS (without Mg²⁺ and Ca²⁺), pH 7.4, 150 mM NaCl, 0.05% Sodium Azide and 40% glycerol

Research Areas: Signal Transduction

Storage & Shipping: Store at -20°C. Avoid repeated freezing and thawing



Immunohistochemistry analysis of paraffin-embedded Human liver cancer tissue using 210192(CTNNAL1 Antibody) at a dilution of 1/30(Cytoplasm and Cell membrane).



Immunohistochemistry analysis of paraffin-embedded Human gastric cancer tissue using 210192(Anti-CTNNAL1 Antibody) at a dilution of 1/30.