

CTSL RABBIT PAB

Cat.#: S216399

Product Name: Anti-CTSL Rabbit Polyclonal Antibody

Synonyms: MEP; CATL; CTSL1

UNIPROT ID: P07711 (Gene Accession - BC012612)

Background: The protein encoded by this gene is a lysosomal cysteine proteinase that plays a major role in intracellular protein catabolism. Its substrates include collagen and elastin, as well as alpha-1 protease inhibitor, a major controlling element of neutrophil elastase activity. The encoded protein has been implicated in several pathologic processes, including myofibril necrosis in myopathies and in myocardial ischemia, and in the renal tubular response to proteinuria. This protein, which is a member of the peptidase C1 family, is a dimer composed of disulfide-linked heavy and light chains, both produced from a single protein precursor. Additionally, this protein cleaves the S1 subunit of the SARS-CoV-2 spike protein, which is necessary for entry of the virus into the cell.

Immunogen: Fusion protein of human CTSL

Applications: ELISA, WB, IHC

Recommended Dilutions: IHC: 50-200;WB: 1000-5000;ELISA: 2000-5000

Host Species: Rabbit

Clonality: Rabbit Polyclonal

Isotype: Immunogen-specific rabbit IgG

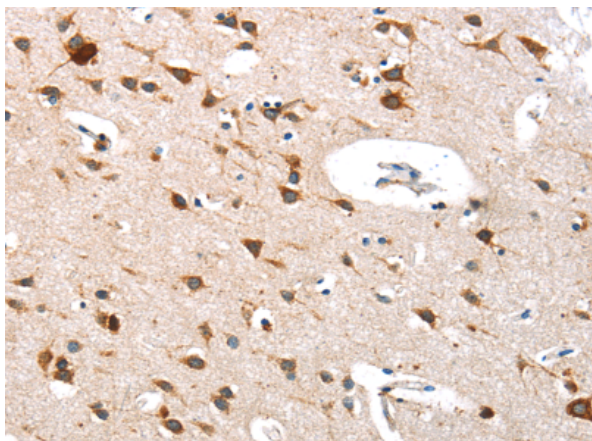
Purification: Antigen affinity purification

Species Reactivity: Human, Mouse

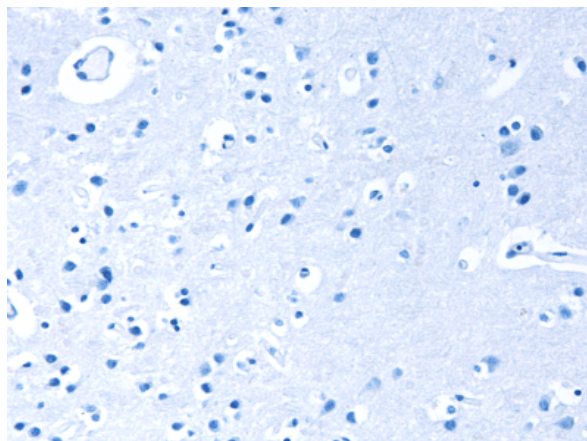
Constituents: PBS (without Mg²⁺ and Ca²⁺), pH 7.4, 150 mM NaCl, 0.05% Sodium Azide and 40% glycerol

Research Areas: Cell Biology

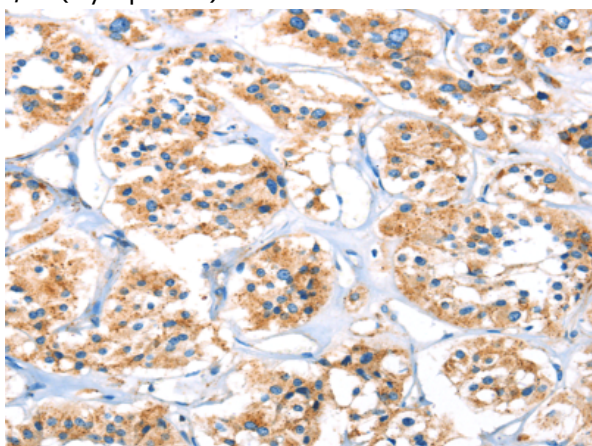
Storage & Shipping: Store at -20°C. Avoid repeated freezing and thawing



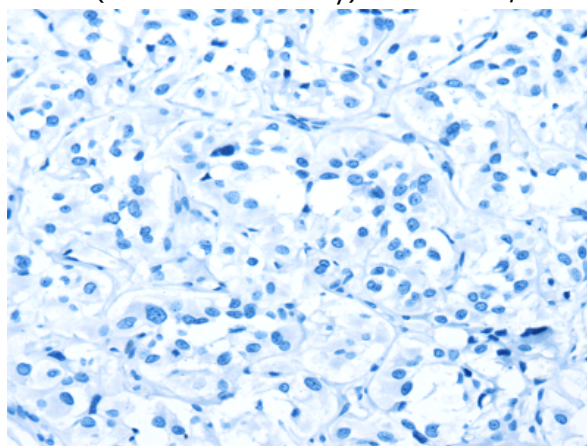
Immunohistochemistry analysis of paraffin embedded Human brain tissue using 216399(CTSL Antibody) at a dilution of 1/40(Cytoplasm).



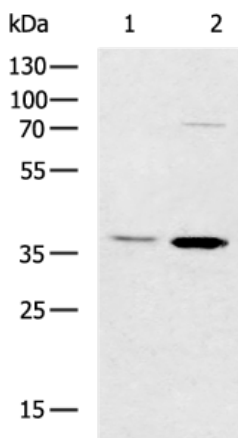
In comparison with the IHC on the left, the same paraffin-embedded Human brain tissue is first treated with the fusion protein and then with 216399(Anti-CTSL Antibody) at dilution 1/40.



The image on the left is immunohistochemistry of paraffin-embedded Human thyroid cancer tissue using 216399(Anti-CTSL Antibody) at a dilution of 1/40.



In comparison with the IHC on the left, the same paraffin-embedded Human thyroid cancer tissue is first treated with fusion protein and then with D220359(Anti-CTSL Antibody) at dilution 1/40.



Gel: 8%SDS-PAGE, Lysate: 40 µg;
Lane 1-2: K562 cell, Mouse liver tissue lysates;
Primary antibody: 216399(CTSL Antibody) at dilution 1/900;
Secondary antibody: HRP-conjugated Goat anti rabbit IgG at 1/5000 dilution;
Exposure time: 30 seconds



Product Description

Pioneering GTPase and Oncogene Product Development since 2010
