

## CTSZ RABBIT PAB

**Cat.#:** S216400

**Product Name:** Anti-CTSZ Rabbit Polyclonal Antibody

**Synonyms:** CTSX

**UNIPROT ID:** Q9UBR2 (Gene Accession - BC042168 )

**Background:** The protein encoded by this gene is a lysosomal cysteine proteinase and member of the peptidase C1 family. It exhibits both carboxy-monopeptidase and carboxy-dipeptidase activities. The encoded protein has also been known as cathepsin X and cathepsin P. This gene is expressed ubiquitously in cancer cell lines and primary tumors and, like other members of this family, may be involved in tumorigenesis.

**Immunogen:** Fusion protein of human CTSZ

**Applications:** ELISA, WB, IHC

**Recommended Dilutions:** IHC: 100-300;WB: 500-2000;ELISA: 5000-10000

**Host Species:** Rabbit

**Clonality:** Rabbit Polyclonal

**Isotype:** Immunogen-specific rabbit IgG

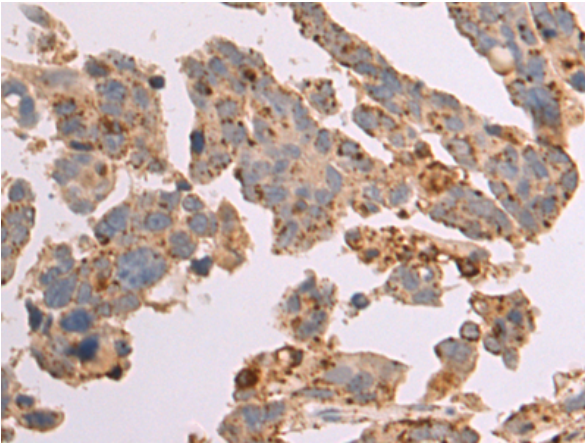
**Purification:** Antigen affinity purification

**Species Reactivity:** Human, Mouse, Rat

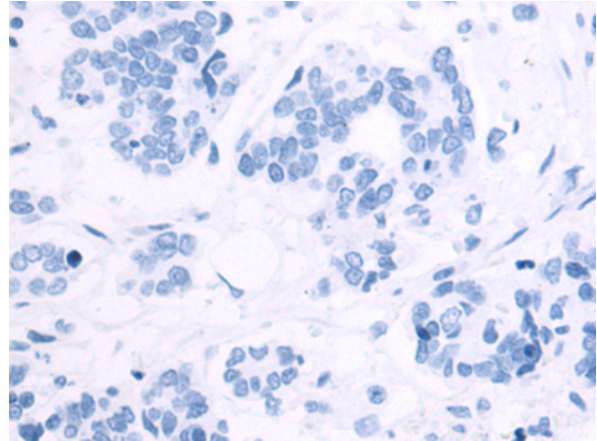
**Constituents:** PBS (without Mg<sup>2+</sup> and Ca<sup>2+</sup>), pH 7.4, 150 mM NaCl, 0.05% Sodium Azide and 40% glycerol

**Research Areas:** Cell Biology

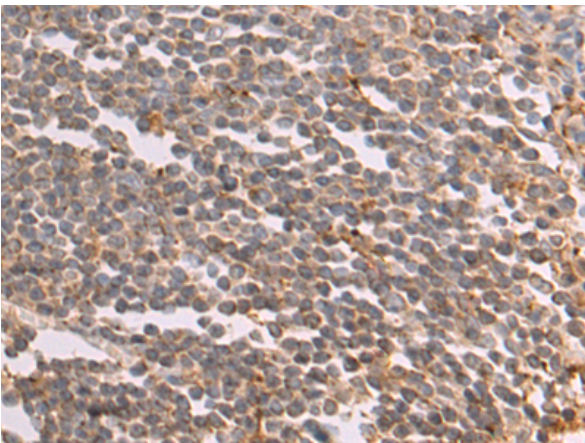
**Storage & Shipping:** Store at -20°C. Avoid repeated freezing and thawing



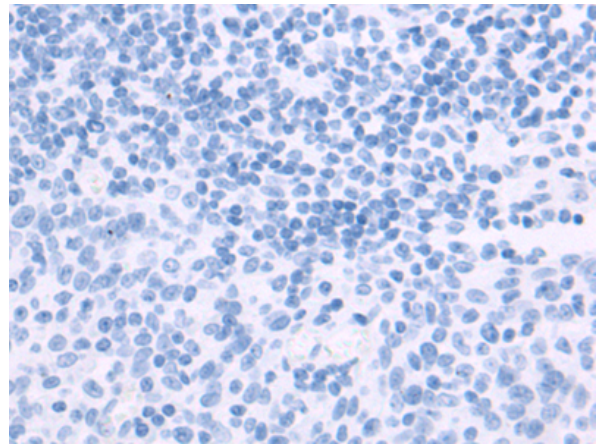
Immunohistochemistry analysis of paraffin embedded Human colorectal cancer tissue using 216400(CTSZ Antibody) at a dilution of 1/90(Cytoplasm).



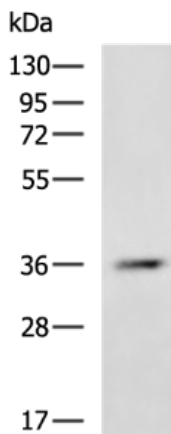
In comparison with the IHC on the left, the same paraffin-embedded Human colorectal cancer tissue is first treated with the fusion protein and then with 216400(Anti-CTSZ Antibody) at dilution 1/90.



The image on the left is immunohistochemistry of paraffin-embedded Human tonsil tissue using 216400(Anti-CTSZ Antibody) at a dilution of 1/90.



In comparison with the IHC on the left, the same paraffin-embedded Human tonsil tissue is first treated with fusion protein and then with D220362(Anti-CTSZ Antibody) at dilution 1/90.



Gel: 8%SDS-PAGE, Lysate: 40 µg;  
Lane: Human liver tissue lysate;  
Primary antibody: 216400(CTSZ Antibody) at dilution 1/700;  
Secondary antibody: HRP-conjugated Goat anti rabbit IgG at 1/5000 dilution;  
Exposure time: 30 seconds



# Product Description

Pioneering GTPase and Oncogene Product Development since 2010

---