

CUL4A RABBIT PAB

Cat.#: S219724

Product Name: Anti-CUL4A Rabbit Polyclonal Antibody

Synonyms:

UNIPROT ID: Q13619 (Gene Accession - NP_001008895)

Background: CUL4A is the ubiquitin ligase component of a multimeric complex involved in the degradation of DNA damage-response proteins.

Immunogen: Synthetic peptide of human CUL4A

Applications: ELISA, WB, IHC

Recommended Dilutions: IHC: 40-200;WB: 500-2000;ELISA: 5000-10000

Host Species: Rabbit

Clonality: Rabbit Polyclonal

Isotype: Immunogen-specific rabbit IgG

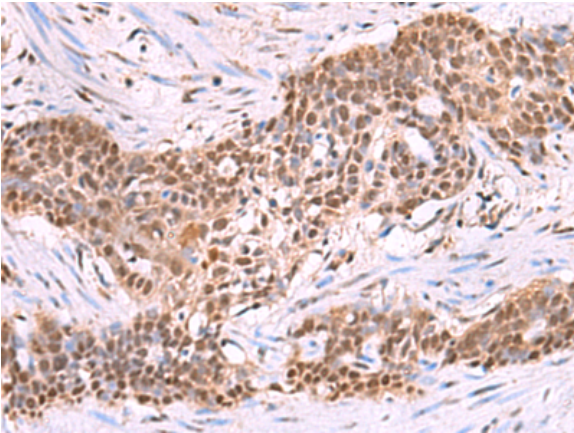
Purification: Antigen affinity purification

Species Reactivity: Human, Mouse

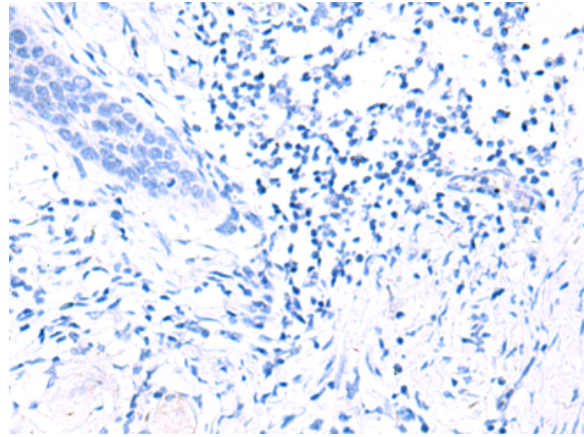
Constituents: PBS (without Mg²⁺ and Ca²⁺), pH 7.4, 150 mM NaCl, 0.05% Sodium Azide and 40% glycerol

Research Areas: Cell Biology

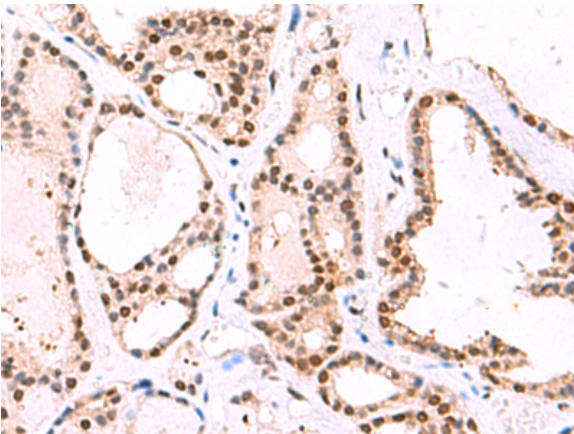
Storage & Shipping: Store at -20°C. Avoid repeated freezing and thawing



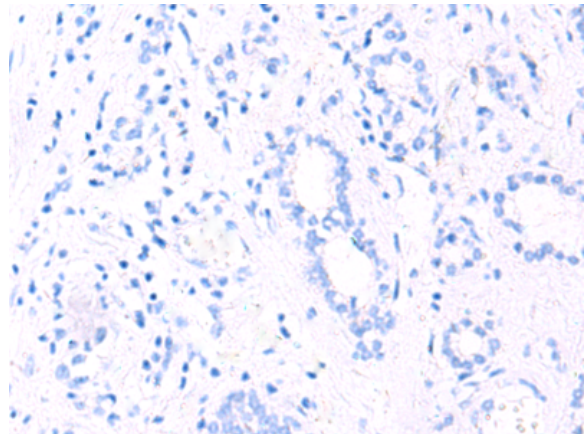
Immunohistochemistry analysis of paraffin embedded Human esophagus cancer tissue using 219724 (Anti-CUL4A Antibody) at a dilution of 1/45 (Nucleus).



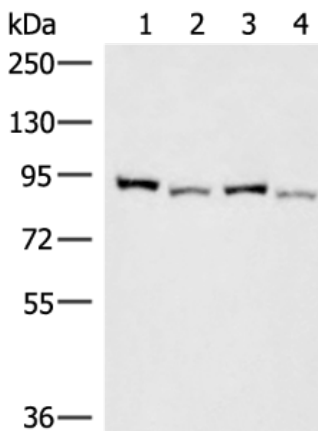
In comparison with the IHC on the left, the same paraffin-embedded Human esophagus cancer tissue is first treated with the synthetic peptide and then with 219724 (Anti-CUL4A Antibody) at dilution 1/45.



The image on the left is immunohistochemistry of paraffin-embedded Human thyroid cancer tissue using 219724 (Anti-CUL4A Antibody) at a dilution of 1/45.



In comparison with the IHC on the left, the same paraffin-embedded Human thyroid cancer tissue is first treated with synthetic peptide and then with D260215 (Anti-CUL4A Antibody) at dilution 1/45.



Gel: 6% SDS-PAGE, Lysate: 40 µg;
 Lane 1-4: HepG2, HeLa, 231 cell and Human fetal brain tissue lysates;
 Primary antibody: 219724 (Anti-CUL4A Antibody) at dilution 1/500;
 Secondary antibody: Goat anti rabbit IgG at 1/8000 dilution;
 Exposure time: 3 seconds



Product Description

Pioneering GTPase and Oncogene Product Development since 2010
