

CULLIN 2 RABBIT MAB

Cat.#: N262079

Product Name: Anti-Cullin 2 Rabbit Monoclonal Antibody

Synonyms: Cul2; CUL 2; CUL2; cullin 2

UNIPROT ID: Q13617

Background: Core component of multiple cullin-RING-based ECS (ElonginB/C-CUL2/5-SOCS-box protein) E3 ubiquitin-protein ligase complexes, which mediate the ubiquitination of target proteins. May serve as a rigid scaffold in the complex and may contribute to catalysis through positioning of the substrate and the ubiquitin-conjugating enzyme.

Immunogen: A synthetic peptide of human Cullin 2

Applications: WB,IP

Recommended Dilutions: WB: 1/500-1/1000 IP: 1/20

Host Species: Rabbit

Clonality: Rabbit Monoclonal

Clone ID: R09-8A9

MW: Calculated MW: 87 kDa; Observed MW: 87 kDa

Isotype: IgG

Purification: Affinity Purified

Species Reactivity: Human,Mouse,Rat

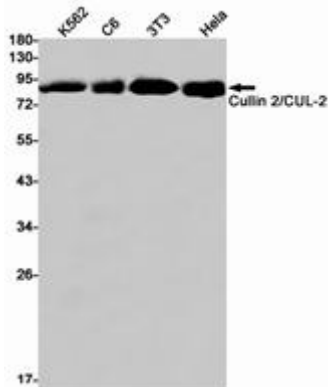
Conjugation: Unconjugated

Modification: Unmodified

Constituents: PBS (without Mg²⁺ and Ca²⁺), pH 7.3 containing 50% glycerol, 0.5% BSA and 0.02% sodium azide

Research Areas: Cell Biology

Storage & Shipping: Store at -20°C. Avoid repeated freezing and thawing



Western blot analysis of Cullin 2/CUL2 in K562, C6, 3T3, HeLa lysates using Cullin 2 antibody.