

CULLIN 3 RABBIT MAB

Cat.#: N262080

Product Name: Anti-Cullin 3 Rabbit Monoclonal Antibody

Synonyms: CUL3; KIAA0617; Cullin-3; CUL-3

UNIPROT ID: Q13618

Background: Core component of multiple cullin-RING-based BCR (BTB-CUL3-RBX1) E3 ubiquitin-protein ligase complexes which mediate the ubiquitination and subsequent proteasomal degradation of target proteins. As a scaffold protein may contribute to catalysis through positioning of the substrate and the ubiquitin-conjugating enzyme.

Immunogen: A synthetic peptide of human Cullin 3

Applications: WB,IP

Recommended Dilutions: WB: 1/500-1/1000 IP: 1/20

Host Species: Rabbit

Clonality: Rabbit Monoclonal

Clone ID: R09-4D1

MW: Calculated MW: 89 kDa; Observed MW: 89 kDa

Isotype: IgG

Purification: Affinity Purified

Species Reactivity: Human,Mouse,Rat

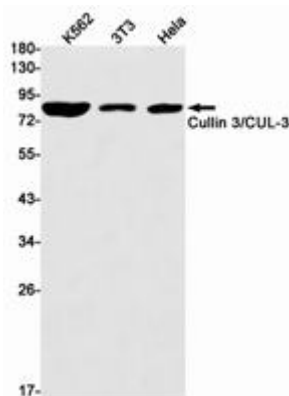
Conjugation: Unconjugated

Modification: Unmodified

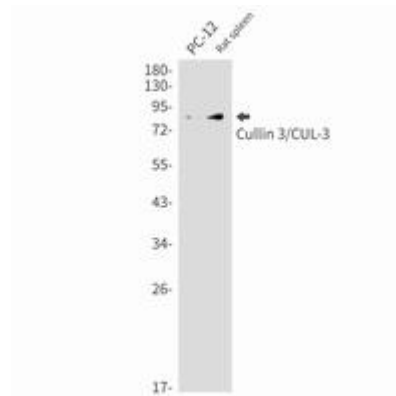
Constituents: PBS (without Mg²⁺ and Ca²⁺), pH 7.3 containing 50% glycerol, 0.5% BSA and 0.02% sodium azide

Research Areas: Cell Biology

Storage & Shipping: Store at -20°C. Avoid repeated freezing and thawing



Western blot analysis of Cullin 3/CUL3 in K562, 3T3, HeLa lysates using Cullin 3/CUL3 antibody.



Western blot analysis of Cullin 3/CUL3 in PC-12, rat spleen lysates using Cullin 3 antibody.