

## CULLIN 4A RABBIT MAB

**Cat.#:** N263288

**Product Name:** Anti-Cullin 4A Rabbit Monoclonal Antibody

**Synonyms:** Cul4a; Cullin-4A

**UNIPROT ID:** Q13619

**Background:** Core component of multiple cullin-RING-based E3 ubiquitin-protein ligase complexes which mediate the ubiquitination and subsequent proteasomal degradation of target proteins. As a scaffold protein may contribute to catalysis through positioning of the substrate and the ubiquitin-conjugating enzyme.

**Immunogen:** A synthetic peptide of human Cullin 4A/CUL-4A

**Applications:** WB,IHC-P,IP

**Recommended Dilutions:** WB: 1/500-1/1000 IHC: 1/50-1/100 IP: 1/20

**Host Species:** Rabbit

**Clonality:** Rabbit Monoclonal

**Clone ID:** R06-0C5

**MW:** Calculated MW: 88 kDa; Observed MW: 88 kDa

**Isotype:** IgG

**Purification:** Affinity Purified

**Species Reactivity:** Human

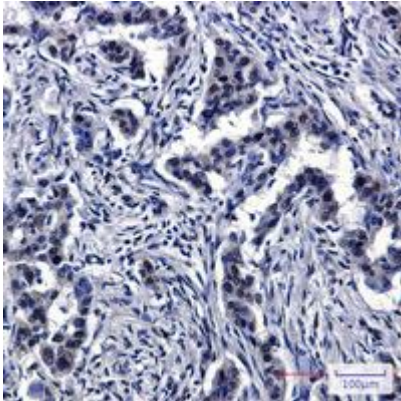
**Conjugation:** Unconjugated

**Modification:** Unmodified

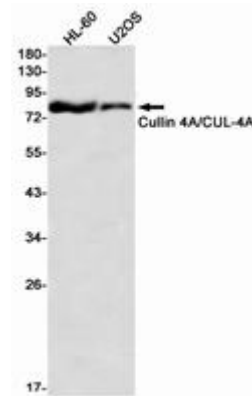
**Constituents:** PBS (without Mg<sup>2+</sup> and Ca<sup>2+</sup>), pH 7.3 containing 50% glycerol, 0.5% BSA and 0.02% sodium azide

**Research Areas:** Cell Biology

**Storage & Shipping:** Store at -20°C. Avoid repeated freezing and thawing



Immunohistochemistry analysis of paraffin-embedded Human lung cancer using Cullin 4A/CUL4A antibody. High-pressure and temperature Sodium Citrate pH 6.0 was used for antigen retrieval.



Western blot analysis of Cullin 4A/CUL4A in HL-60, U2OS lysates using Cullin 4A antibody.