

CWC27 RABBIT PAB

Cat.#: S220885

Product Name: Anti-CWC27 Rabbit Polyclonal Antibody

Synonyms: RPSKA; NY-CO-10; SDCCAG10; SDCCAG-10

UNIPROT ID: Q6UX04 (Gene Accession - NP_005860)

Background: As part of the spliceosome, plays a role in pre-mRNA splicing (PubMed:29360106). Probable inactive PPLase with no peptidyl-prolyl cis-trans isomerase activity (PubMed:20676357).

Immunogen: Synthetic peptide of human CWC27

Applications: ELISA, IHC

Recommended Dilutions: IHC: 25-100; ELISA: 1000-2000

Host Species: Rabbit

Clonality: Rabbit Polyclonal

Isotype: Immunogen-specific rabbit IgG

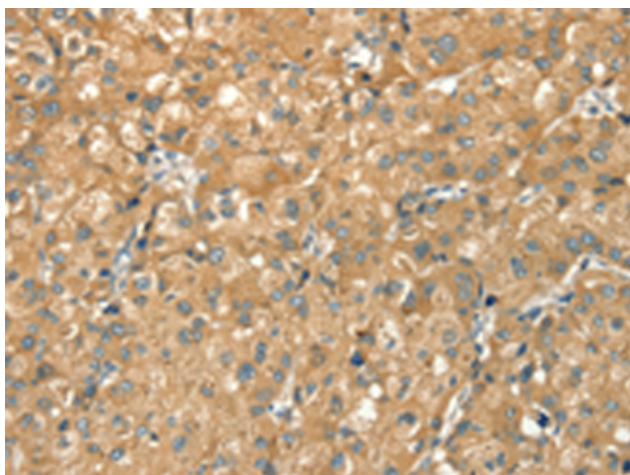
Purification: Antigen affinity purification

Species Reactivity: Human, Mouse, Rat

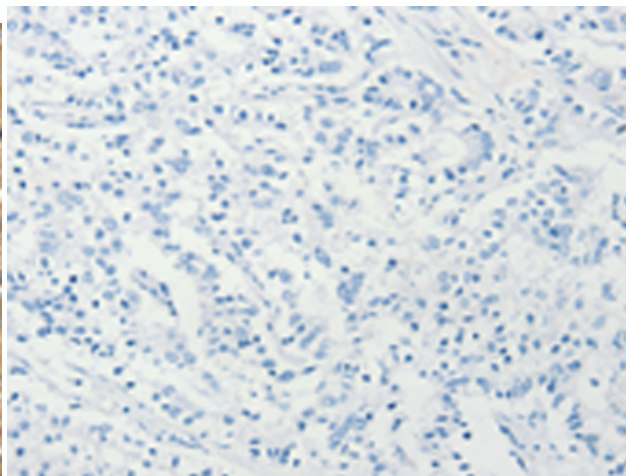
Constituents: PBS (without Mg²⁺ and Ca²⁺), pH 7.4, 150 mM NaCl, 0.05% Sodium Azide and 40% glycerol

Research Areas: Cancer

Storage & Shipping: Store at -20°C. Avoid repeated freezing and thawing



Immunohistochemistry analysis of paraffin embedded Human liver cancer tissue using 220885(CWC27 Antibody) at a dilution of 1/20(Cytoplasm).



In comparison with the IHC on the left, the same paraffin-embedded Human liver cancer tissue is first treated with the synthetic peptide and then with 220885(Anti-CWC27 Antibody) at dilution 1/20.