

CX3CR1 RABBIT PAB

Cat.#: S221321

Product Name: Anti-CX3CR1 Rabbit Polyclonal Antibody

Synonyms: V28; CCRL1; GPR13; CMKDRI; GPRV28; CMKBRL1

Target: CX3CR1 (C-X3-C motif chemokine receptor 1)

UNIPROT ID: P49238 (Gene Accession - NP_001328)

Background: CX3C motif chemokine receptor 1 (CX3CR1) is known as the fractalkine receptor or G-protein coupled receptor 13 (GPR13). It is a transmembrane protein of the G protein-coupled receptor 1 (GPCR1) family. The receptor binds the inflammatory chemokine CX3CL1 (also called neurotactin in mice or fractalkine in humans). This endogenous ligand solely binds to CX3CR1 receptor. Interaction of CX3CR1 with CX3CL1 can mediate migration, adhesion and retention of leukocytes, because Fractalkine exists as membrane-anchored protein (mCX3CL1) as well as cleaved soluble molecule (sCX3CL1) due to proteolysis by metalloproteinases (MPPs). The shredded form carries out typical function of conventional chemokines, the chemotaxis, while the membrane-bound protein behaves as adhesion molecule for facilitation of diapedesis.

Immunogen: Synthetic peptide of human CX3CR1

Applications: ELISA, IHC

Recommended Dilutions: IHC: 50-100; ELISA: 5000-10000

Host Species: Rabbit

Clonality: Rabbit Polyclonal

Isotype: Immunogen-specific rabbit IgG

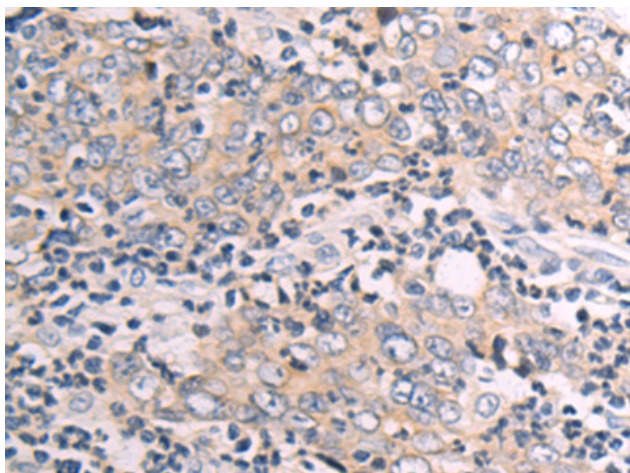
Purification: Antigen affinity purification

Species Reactivity: Human

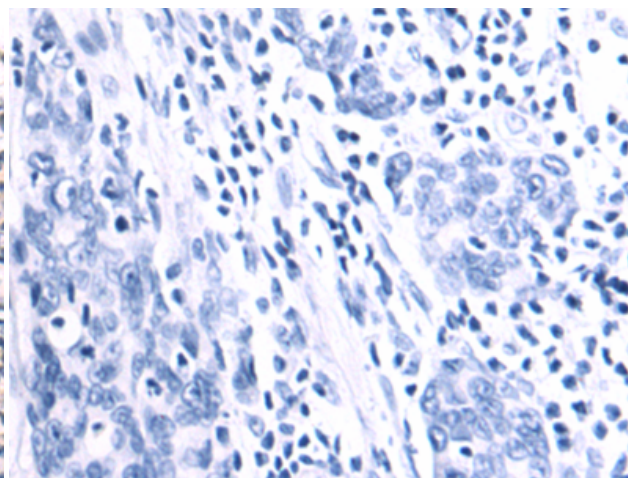
Constituents: PBS (without Mg²⁺ and Ca²⁺), pH 7.4, 150 mM NaCl, 0.05% Sodium Azide and 40% glycerol

Research Areas: Signal Transduction, Neuroscience, Immunology

Storage & Shipping: Store at -20°C. Avoid repeated freezing and thawing



Immunohistochemistry analysis of paraffin embedded Human gastric cancer tissue using 221321(CX3CR1 Antibody) at a dilution of 1/50(Cytoplasm).



In comparison with the IHC on the left, the same paraffin-embedded Human gastric cancer tissue is first treated with the synthetic peptide and then with 221321(Anti-CX3CR1 Antibody) at dilution 1/50.



Product Description

Pioneering GTPase and Oncogene Product Development since 2010
