

CXCL5 RABBIT PAB

Cat.#: S221426

Product Name: Anti-CXCL5 Rabbit Polyclonal Antibody

Synonyms: SCYB5; ENA-78

UNIPROT ID: P42830 (Gene Accession - NP_002985)

Background: This gene encodes a protein that is a member of the CXC subfamily of chemokines. Chemokines, which recruit and activate leukocytes, are classified by function (inflammatory or homeostatic) or by structure. This protein is proposed to bind the G-protein coupled receptor chemokine (C-X-C motif) receptor 2 to recruit neutrophils, to promote angiogenesis and to remodel connective tissues. This protein is thought to play a role in cancer cell proliferation, migration, and invasion.

Immunogen: Synthetic peptide of human CXCL5

Applications: ELISA, IHC

Recommended Dilutions: IHC: 35-200; ELISA: 5000-10000

Host Species: Rabbit

Clonality: Rabbit Polyclonal

Isotype: Immunogen-specific rabbit IgG

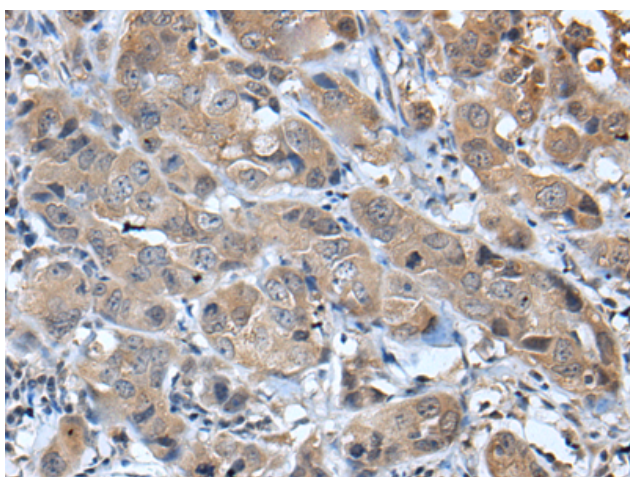
Purification: Antigen affinity purification

Species Reactivity: Human

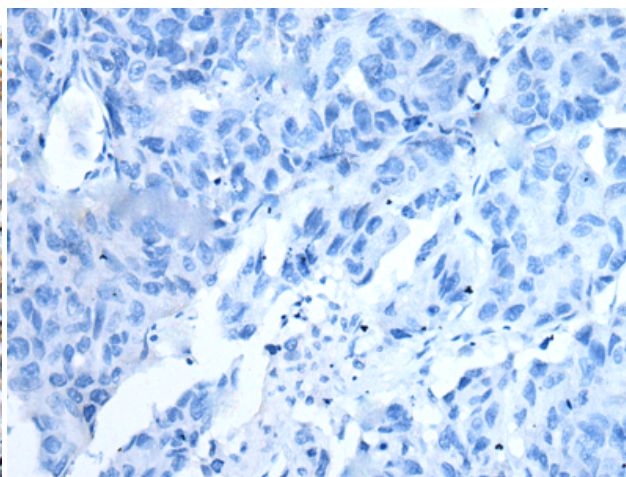
Constituents: PBS (without Mg²⁺ and Ca²⁺), pH 7.4, 150 mM NaCl, 0.05% Sodium Azide and 40% glycerol

Research Areas: Cardiovascular, Immunology

Storage & Shipping: Store at -20°C. Avoid repeated freezing and thawing



Immunohistochemistry analysis of paraffin embedded Human breast cancer tissue using 221426(CXCL5 Antibody) at a dilution of 1/45(Secreted).



In comparison with the IHC on the left, the same paraffin-embedded Human breast cancer tissue is first treated with the synthetic peptide and then with 221426(Anti-CXCL5 Antibody) at dilution 1/45.