

## CXCR3 RABBIT PAB

**Cat.#:** S216456

**Product Name:** Anti-CXCR3 Rabbit Polyclonal Antibody

**Synonyms:** GPR9; MigR; CD182; CD183; Mig-R; CKR-L2; CMKAR3; IP10-R

**UNIPROT ID:** P49682 (Gene Accession - BC034403 )

**Background:** This gene encodes a G protein-coupled receptor with selectivity for three chemokines, termed CXCL9/Mig (monokine induced by interferon-g), CXCL10/IP10 (interferon-g-inducible 10 kDa protein) and CXCL11/I-TAC (interferon-inducible T cell  $\alpha$ -chemoattractant). Binding of chemokines to this protein induces cellular responses that are involved in leukocyte traffic, most notably integrin activation, cytoskeletal changes and chemotactic migration. Alternatively spliced transcript variants encoding different isoforms have been found for this gene. One of the isoforms (CXCR3-B) shows high affinity binding to chemokine, CXCL4/PF4 (PMID:12782716).

**Immunogen:** Fusion protein of human CXCR3

**Applications:** ELISA, WB, IHC

**Recommended Dilutions:** IHC: 50-200;WB: 500-2000;ELISA: 5000-10000

**Host Species:** Rabbit

**Clonality:** Rabbit Polyclonal

**Isotype:** Immunogen-specific rabbit IgG

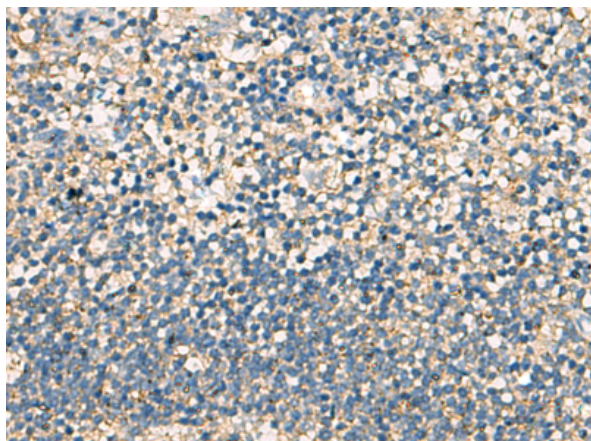
**Purification:** Antigen affinity purification

**Species Reactivity:** Human, Mouse

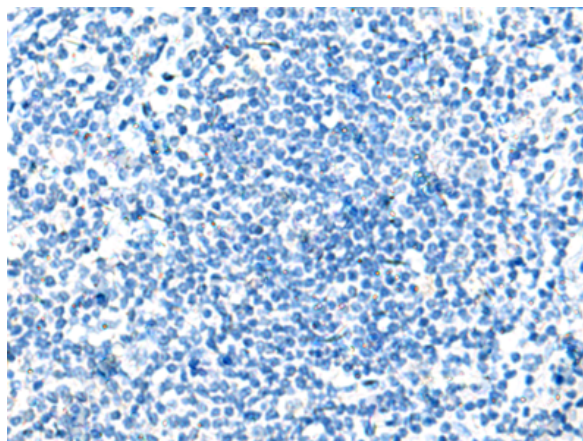
**Constituents:** PBS (without Mg<sup>2+</sup> and Ca<sup>2+</sup>), pH 7.4, 150 mM NaCl, 0.05% Sodium Azide and 40% glycerol

**Research Areas:** Signal Transduction, Cardiovascular, Immunology

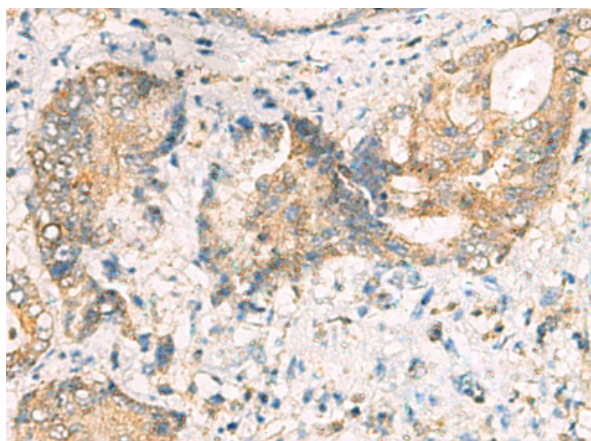
**Storage & Shipping:** Store at -20°C. Avoid repeated freezing and thawing



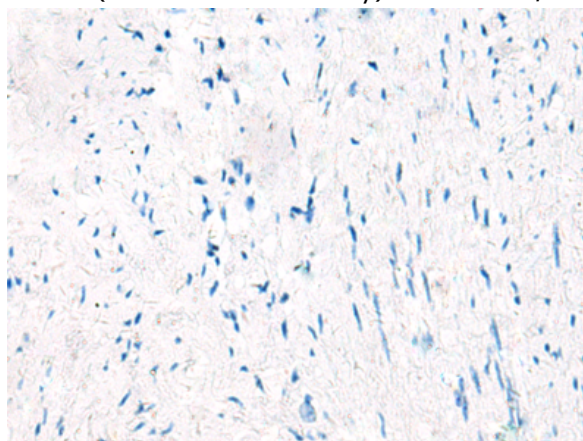
Immunohistochemistry analysis of paraffin embedded Human tonsil tissue using 216456(CXCR3 Antibody) at a dilution of 1/70(Cytoplasm and Cell membrane).



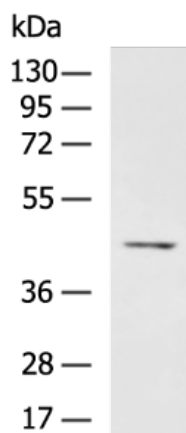
In comparison with the IHC on the left, the same paraffin-embedded Human tonsil tissue is first treated with the fusion protein and then with 216456(Anti-CXCR3 Antibody) at dilution 1/70.



The image on the left is immunohistochemistry of paraffin-embedded Human cervical cancer tissue using 216456(Anti-CXCR3 Antibody) at a dilution of 1/70.



In comparison with the IHC on the left, the same paraffin-embedded Human cervical cancer tissue is first treated with fusion protein and then with D220505(Anti-CXCR3 Antibody) at dilution 1/70.



Gel: 8%SDS-PAGE, Lysate: 40 µg;  
Lane: LO2 cell lysate ;  
Primary antibody: 216456(CXCR3 Antibody) at dilution 1/700;  
Secondary antibody: HRP-conjugated Goat anti rabbit IgG at 1/5000 dilution;  
Exposure time: 6 seconds



# Product Description

Pioneering GTPase and Oncogene Product Development since 2010

---