

CXCR6 RABBIT PAB

Cat.#: N225016

Product Name: Anti-CXCR6 Rabbit pAb

Synonyms: CXCR6; BONZO; STRL33; TYMSTR; C-X-C chemokine receptor type 6; CXC-R6; CXCR-6; CDw186; G-protein coupled receptor STRL33; G-protein coupled receptor bonzo; CD186

UNIPROT ID: O00574

Background: Receptor for the C-X-C chemokine CXCL16.

Immunogen: The antiserum was produced against synthesized peptide derived from the N-terminal region of human CXCR6. AA range:1-50

Applications: WB,IHC-P,ELISA

Recommended Dilutions: WB: 1/500-1/1000 IHC: 1/50-1/100 ELISA: 1/10000

Host Species: Rabbit

Clonality: Rabbit Polyclonal

Clone ID: -

MW: Calculated MW: 39 kDa; Observed MW: 39 kDa

Isotype: IgG

Purification: Affinity Purified

Species Reactivity: Human

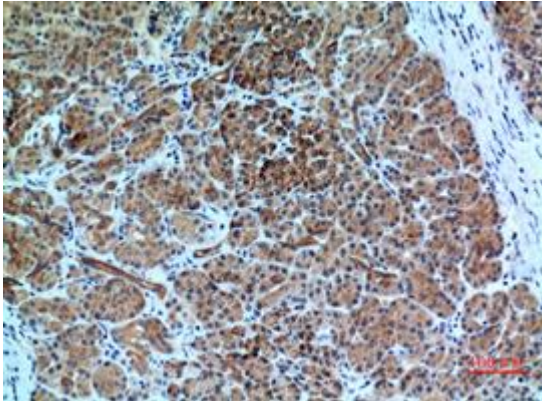
Conjugation: Unconjugated

Modification: Unmodified

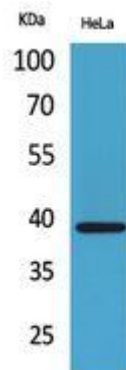
Constituents: PBS (without Mg²⁺ and Ca²⁺), pH 7.3 containing 50% glycerol, 0.5% BSA and 0.02% sodium azide

Research Areas: Microbiology

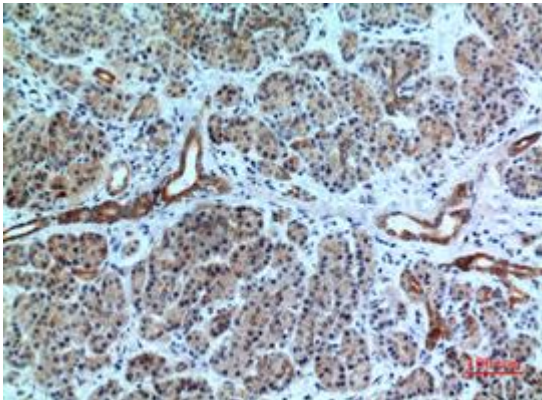
Storage & Shipping: Store at -20°C. Avoid repeated freezing and thawing



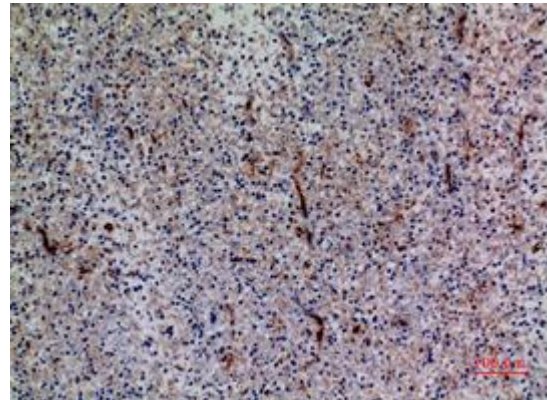
Immunohistochemistry analysis of paraffin-embedded Human pancreas using CXCR6 antibody. High-pressure and temperature Sodium Citrate pH 6.0 was used for antigen retrieval.



Western blot analysis of CXCR6 in HeLa lysates using CXCR6 antibody.



Immunohistochemistry analysis of paraffin-embedded Human pancreas using CXCR6 antibody. High-pressure and temperature Sodium Citrate pH 6.0 was used for antigen retrieval.



Immunohistochemistry analysis of paraffin-embedded Human spleen using CXCR6 antibody. High-pressure and temperature Sodium Citrate pH 6.0 was used for antigen retrieval.