

CYB5R1 RABBIT PAB

Cat.#: S218560

Product Name: Anti-CYB5R1 Rabbit Polyclonal Antibody

Synonyms: B5R1; B5R2; B5R.1; NQO3A2; humb5R2

UNIPROT ID: Q9UHQ9 (Gene Accession - BC018732)

Background: NADH-cytochrome b5 reductases participate in a variety of physiological processes including biosynthesis of cholesterol, methemoglobin reduction of erythrocytes, elongation of fatty acids and metabolism of drugs. CYB5R1 (cytochrome b5 reductase 1), also known as NADH-cytochrome b5 reductase 1, B5R1, NQO3A2, humb5R2 or NAD(P)H:quinone oxidoreductase type 3 polypeptide A2, is a 305 amino acid single-pass membrane protein that contains one FAD-binding FR-type domain and belongs to the flavoprotein pyridine nucleotide cytochrome reductase family. Widely expressed, CYB5R1 binds FAD as a cofactor and is encoded by a gene located on human chromosome 1. Human chromosome 1 spans 260 million base pairs, contains over 3,000 genes, comprises nearly 8% of the human genome and houses a large number of disease-associated genes, including those that are involved in familial adenomatous polyposis, Stickler syndrome, Parkinson's disease, Gaucher disease, schizophrenia and Usher syndrome.

Immunogen: Fusion protein of human CYB5R1

Applications: ELISA, WB, IHC

Recommended Dilutions: IHC: 25-100;WB: 200-1000;ELISA: 5000-10000

Host Species: Rabbit

Clonality: Rabbit Polyclonal

Isotype: Immunogen-specific rabbit IgG

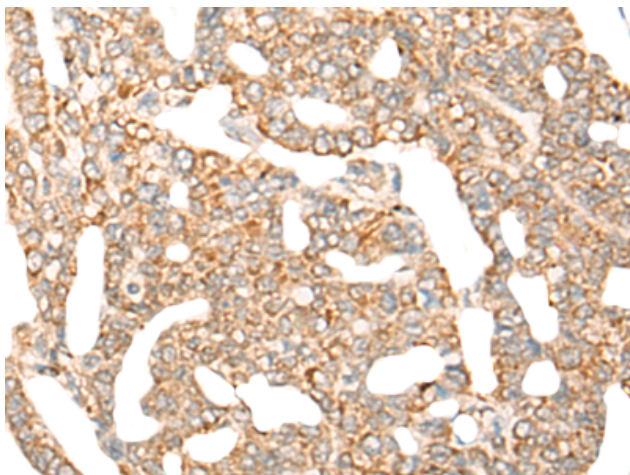
Purification: Antigen affinity purification

Species Reactivity: Human, Mouse, Rat

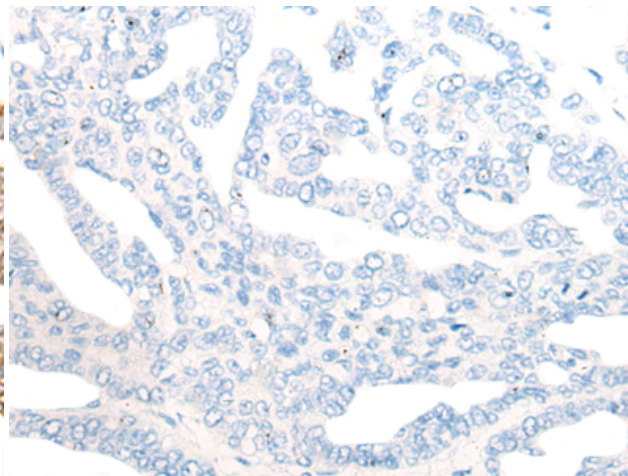
Constituents: PBS (without Mg²⁺ and Ca²⁺), pH 7.4, 150 mM NaCl, 0.05% Sodium Azide and 40% glycerol

Research Areas: Metabolism, Cardiovascular

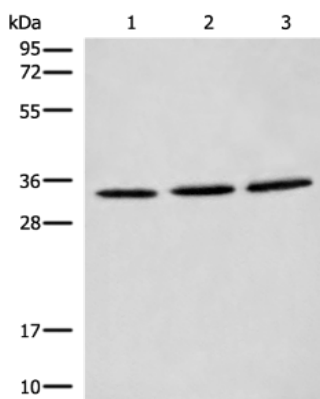
Storage & Shipping: Store at -20°C. Avoid repeated freezing and thawing



Immunohistochemistry analysis of paraffin embedded Human liver cancer tissue using 218560(CYB5R1 Antibody) at a dilution of 1/30(Cytoplasm and Cell membrane).



In comparison with the IHC on the left, the same paraffin-embedded Human liver cancer tissue is first treated with the fusion protein and then with 218560(Anti-CYB5R1 Antibody) at dilution 1/30.



Gel: 12%SDS-PAGE, Lysate: 40 μ g;

Lane 1-3: K562, HeLa and HEPG2 cell lysates;

Primary antibody: 218560(CYB5R1 Antibody) at dilution 1/300;

Secondary antibody: Goat anti rabbit IgG at 1/8000 dilution;

Exposure time: 5 seconds