

CYCLIN A1/A2 RABBIT MAB

Cat.#: N263634

Product Name: Anti-Cyclin A1/A2 Rabbit Monoclonal Antibody

Synonyms: CCN1; CCNA; CCNA1; CCNA2; CT146; Cyclin-A; Cyclin-A1; Cyclin-A2

UNIPROT ID: P20248/P78396

Background: May primarily function in the control of the germline meiotic cell cycle and additionally in the control of mitotic cell cycle in some somatic cells. Essential for the control of the cell cycle at the G1/S (start) and the G2/M (mitosis) transitions.

Immunogen: A synthesized peptide derived from human Cyclin A1/A2

Applications: WB,IP

Recommended Dilutions: WB: 1/500-1/1000 IP: 1/20

Host Species: Rabbit

Clonality: Rabbit Monoclonal

Clone ID: R07-3D4

MW: Calculated MW: 52,49 kDa; Observed MW: 52,49 kDa

Isotype: IgG

Purification: Affinity Purified

Species Reactivity: Human

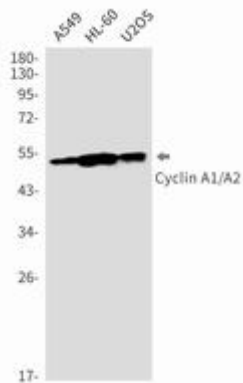
Conjugation: Unconjugated

Modification: Unmodified

Constituents: PBS (without Mg²⁺ and Ca²⁺), pH 7.3 containing 50% glycerol, 0.5% BSA and 0.02% sodium azide

Research Areas: Cell Biology

Storage & Shipping: Store at -20°C. Avoid repeated freezing and thawing



Western blot analysis of Cyclin A1/A2 in A549, HL-60, U2OS lysates using Cyclin A1/A2 antibody.