

CYCLIN A1/A2 RABBIT PAB

Cat.#: N225718

Product Name: Anti-Cyclin A1/A2 Rabbit pAb

Synonyms: CCN1; CCNA; CCNA1; CCNA2; CT146; Cyclin-A; Cyclin-A1; Cyclin-A2

UNIPROT ID: P20248/P78396

Background: May primarily function in the control of the germline meiotic cell cycle and additionally in the control of mitotic cell cycle in some somatic cells. Essential for the control of the cell cycle at the G1/S (start) and the G2/M (mitosis) transitions.

Immunogen: A synthesized peptide derived from human Cyclin A1/A2

Applications: WB,IHC-P,IP

Recommended Dilutions: WB: 1/500-1/1000 IHC: 1/50-1/100 IP: 1/20

Host Species: Rabbit

Clonality: Rabbit Polyclonal

Clone ID: -

MW: Calculated MW: 52,49 kDa; Observed MW: 52,49 kDa

Isotype: IgG

Purification: Affinity Chromatography

Species Reactivity: Human

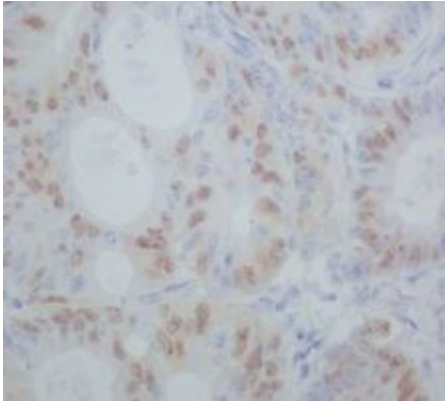
Conjugation: Unconjugated

Modification: Unmodified

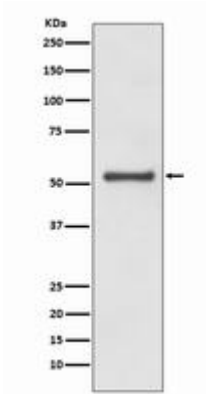
Constituents: PBS (without Mg²⁺ and Ca²⁺), pH 7.3 containing 50% glycerol, 0.5% BSA and 0.02% sodium azide

Research Areas: Cell Biology

Storage & Shipping: Store at -20°C. Avoid repeated freezing and thawing



Immunohistochemistry analysis of paraffin-embedded Human colon cancer using Cyclin A1/A2 antibody. High-pressure and temperature Sodium Citrate pH 6.0 was used for antigen retrieval.



Western blot analysis of Cyclin A1/A2 in HeLa lysates using Cyclin A1/A2 antibody.