

CYCLIN A1 RABBIT PAB

Cat.#: N225353

Product Name: Anti-Cyclin A1 Rabbit pAb

Synonyms: CCNA1; Cyclin-A1

UNIPROT ID: P78396

Background: May be involved in the control of the cell cycle at the G1/S (start) and G2/M (mitosis) transitions.

Immunogen: The antiserum was produced against synthesized peptide derived from human Cyclin A. AA range:221-270

Applications: WB,IHC-F,IHC-P,ICC/IF,ELISA

Recommended Dilutions: WB: 1/500-1/1000 IHC: 1/50-1/100 IF: 1/50-1/200
ELISA: 1/10000

Host Species: Rabbit

Clonality: Rabbit Polyclonal

Clone ID: -

MW: Calculated MW: 52 kDa; Observed MW: 52 kDa

Isotype: IgG

Purification: Affinity Purified

Species Reactivity: Human,Mouse,Rat,Monkey

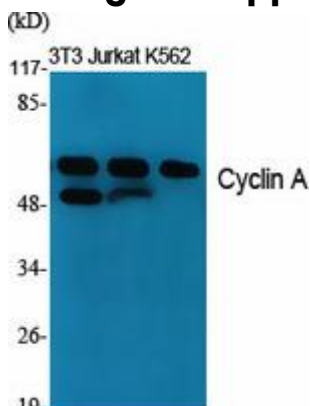
Conjugation: Unconjugated

Modification: Unmodified

Constituents: PBS (without Mg²⁺ and Ca²⁺), pH 7.3 containing 50% glycerol, 0.5% BSA and 0.02% sodium azide

Research Areas: Cell Biology

Storage & Shipping: Store at -20°C. Avoid repeated freezing and thawing



Western blot analysis of Cyclin A1 in various lysates using Cyclin A1 antibody.



Product Description

Pioneering GTPase and Oncogene Product Development since 2010
