

CYCLIN A2 RABBIT MAB

Cat.#: N262087

Product Name: Anti-Cyclin A2 Rabbit Monoclonal Antibody

Synonyms: CCN1; CCNA

UNIPROT ID: P20248

Background: The protein encoded by this gene belongs to the highly conserved cyclin family, whose members are characterized by a dramatic periodicity in protein abundance through the cell cycle. Cyclins function as regulators of CDK kinases. Different cyclins exhibit distinct expression and degradation patterns which contribute to the temporal coordination of each mitotic event. In contrast to cyclin A1, which is present only in germ cells, this cyclin is expressed in all tissues. This cyclin binds and activates CDC2 or CDK2 kinases, and thus promotes both cell cycle G1/S and G2/M transitions.

Immunogen: A synthetic peptide of human Cyclin A2

Applications: WB,IHC-F,IHC-P,ICC/IF,IP

Recommended Dilutions: WB: 1/500-1/1000 IHC: 1/50-1/100 IF: 1/50-1/200 IP: 1/20

Host Species: Rabbit

Clonality: Rabbit Monoclonal

Clone ID: R02-9B6

MW: Calculated MW: 49 kDa; Observed MW: 49 kDa

Isotype: IgG

Purification: Affinity Purified

Species Reactivity: Human,Mouse,Rat

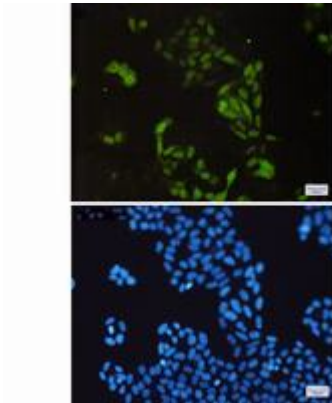
Conjugation: Unconjugated

Modification: Unmodified

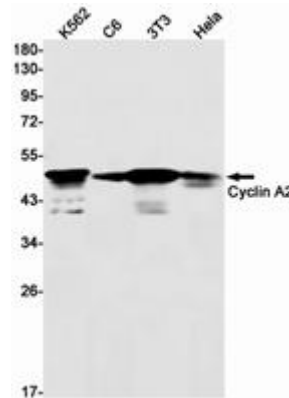
Constituents: PBS (without Mg²⁺ and Ca²⁺), pH 7.3 containing 50% glycerol, 0.5% BSA and 0.02% sodium azide

Research Areas: Cell Biology

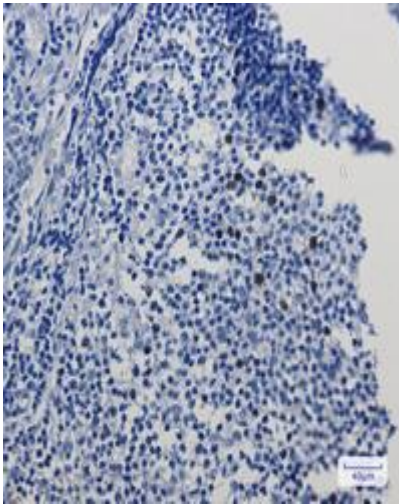
Storage & Shipping: Store at -20°C. Avoid repeated freezing and thawing



Immunocytochemistry analysis of Cyclin A2 (green) in HeLa using Cyclin A2 antibody, and DAPI (blue)



Western blot analysis of Cyclin A2 in K562, C6, 3T3, HeLa lysates using Cyclin A2 antibody.



Immunohistochemistry analysis of paraffin-embedded Human tonsil using Cyclin A2 antibody. High-pressure and temperature Sodium Citrate pH 6.0 was used for antigen retrieval.