

CYCLIN A2 RABBIT MAB

Cat.#: N262086

Product Name: Anti-Cyclin A2 Rabbit Monoclonal Antibody

Synonyms: Ccn1; Ccna; Cyca; Ccn-1; CycA2; AA408589

UNIPROT ID: P51943

Background: Cyclin which controls both the G1/S and the G2/M transition phases of the cell cycle. Functions through the formation of specific serine/threonine kinase holoenzyme complexes with the cyclin-dependent protein kinases CDK1 and CDK2. The cyclin subunit confers the substrate specificity of these complexes and differentially interacts with and activates CDK1 and CDK2 throughout the cell cycle.

Immunogen: Recombinant protein of mouse Cyclin A2

Applications: WB,IHC-F,IHC-P,ICC/IF

Recommended Dilutions: WB: 1/500-1/1000 IHC: 1/50-1/100 IF: 1/50-1/200

Host Species: Rabbit

Clonality: Rabbit Monoclonal

Clone ID: R06-5H1

MW: Calculated MW: 47 kDa; Observed MW: 47 kDa

Isotype: IgG

Purification: Affinity Purified

Species Reactivity: Human,Mouse,Rat

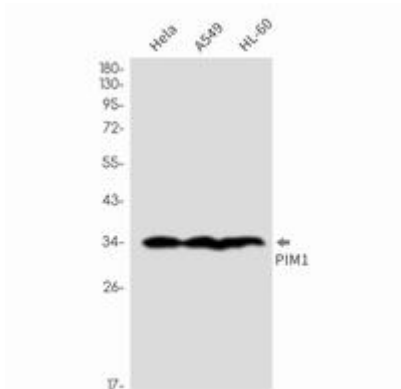
Conjugation: Unconjugated

Modification: Unmodified

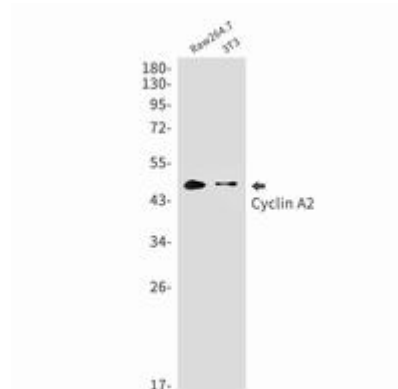
Constituents: PBS (without Mg²⁺ and Ca²⁺), pH 7.3 containing 50% glycerol, 0.5% BSA and 0.02% sodium azide

Research Areas: Cell Biology

Storage & Shipping: Store at -20°C. Avoid repeated freezing and thawing



Western blot analysis of Cyclin A2 in Jurkat, C6, A431 lysates using Cyclin A2 antibody.



Western blot analysis of Cyclin A2 in Raw264.7, 3T3 lysates using Cyclin A2 antibody.