

CYCLIN B1 (1B3) MOUSE MAB

Cat.#: N261328

Product Name: Anti-Cyclin B1 (1B3) Mouse Monoclonal Antibody

Synonyms: CCNB1; CCNB; G2/mitotic-specific cyclin-B1

UNIPROT ID: P14635

Background: Essential for the control of the cell cycle at the G2/M (mitosis) transition. a member of the highly conserved cyclin family, whose members are characterized by a dramatic periodicity in protein abundance through the cell cycle. Cyclins function as regulators of CDK kinases.

Immunogen: Synthetic peptide conjugated to KLH.

Applications: IHC-P

Recommended Dilutions: IHC: 1/50-1/100

Host Species: Mouse

Clonality: Mouse Monoclonal

Clone ID: 1B3-3B1-1B4

MW: -

Isotype: IgG

Purification: Affinity Purified

Species Reactivity: Human,Rat,Mouse

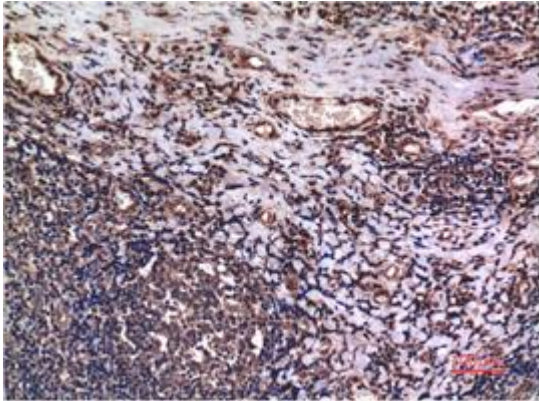
Conjugation: Unconjugated

Modification: Unmodified

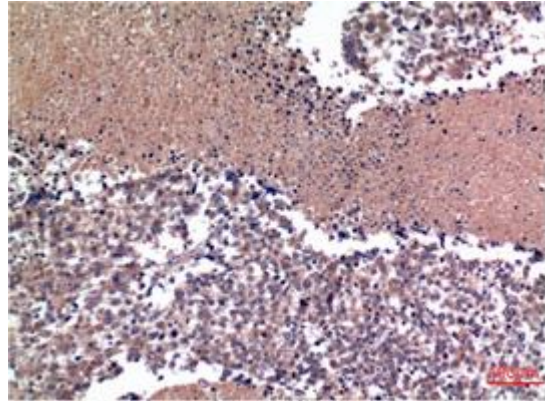
Constituents: PBS (without Mg²⁺ and Ca²⁺), pH 7.3 containing 50% glycerol, 0.5% BSA and 0.02% sodium azide

Research Areas: Cell Biology

Storage & Shipping: Store at -20°C. Avoid repeated freezing and thawing



Immunohistochemical analysis of paraffin-embedded Human tonsils using Cyclin B1 (1B3) antibody. High-pressure and temperature Sodium Citrate pH 6.0 was used for antigen retrieval.



Immunohistochemistry analysis of paraffin-embedded Human Lung Carcinoma Tissue using Cyclin B1 (1B3) antibody. High-pressure and temperature Sodium Citrate pH 6.0 was used for antigen retrieval.