

## CYCLIN B1 RABBIT MAB

**Cat.#:** N261740

**Product Name:** Anti-Cyclin B1 Rabbit Monoclonal Antibody

**Synonyms:** CCNB1; CCNB; G2/mitotic-specific cyclin-B1

**UNIPROT ID:** P14635

**Background:** Essential for the control of the cell cycle at the G2/M (mitosis) transition. a member of the highly conserved cyclin family, whose members are characterized by a dramatic periodicity in protein abundance through the cell cycle. Cyclins function as regulators of CDK kinases.

**Immunogen:** A synthetic peptide of human Cyclin B1

**Applications:** WB, ICC/IF, IP

**Recommended Dilutions:** WB: 1/500-1/1000 IF: 1/50-1/200 IP: 1/20

**Host Species:** Rabbit

**Clonality:** Rabbit Monoclonal

**Clone ID:** R01-7H7

**MW:** Calculated MW: 48 kDa; Observed MW: 55 kDa

**Isotype:** IgG

**Purification:** Affinity Purified

**Species Reactivity:** Human

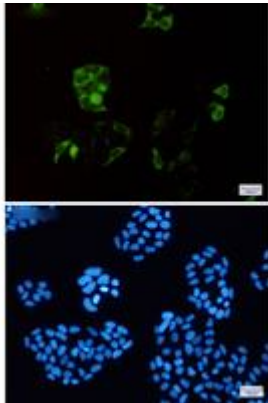
**Conjugation:** Unconjugated

**Modification:** Unmodified

**Constituents:** PBS (without Mg<sup>2+</sup> and Ca<sup>2+</sup>), pH 7.3 containing 50% glycerol, 0.5% BSA and 0.02% sodium azide

**Research Areas:** Cell Biology

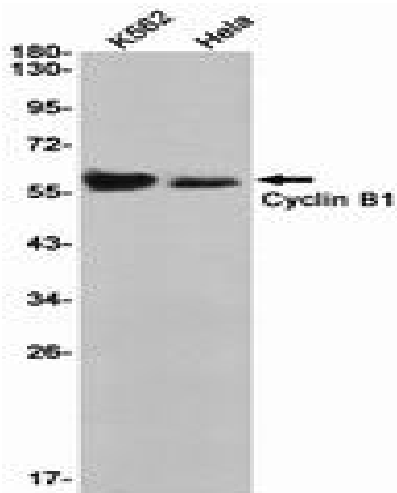
**Storage & Shipping:** Store at -20°C. Avoid repeated freezing and thawing



Immunocytochemistry analysis of Cyclin B1 (green) in HeLa using Cyclin B1 antibody, and DAPI (blue)



Western blot analysis of Cyclin B1 in Jurkat lysates using Cyclin B1 antibody.



Western blot analysis of Cyclin B1 in K562, HeLa lysates using Cyclin B1 antibody.