

CYCLIN B2 RABBIT MAB

Cat.#: N263289

Product Name: Anti-Cyclin B2 Rabbit Monoclonal Antibody

Synonyms: ccnb2; CycB2; Cyclin B2; G2/mitotic specific cyclin B2

UNIPROT ID: O95067

Background: Cyclin B2 is a member of the cyclin family, specifically the B-type cyclins. The B-type cyclins, B1 and B2, associate with p34cdc2 and are essential components of the cell cycle regulatory machinery. Essential for the control of the cell cycle at the G2/M (mitosis) transition.

Immunogen: Recombinant protein of human Cyclin B2/CCNB2

Applications: WB,IP

Recommended Dilutions: WB: 1/500-1/1000 IP: 1/20

Host Species: Rabbit

Clonality: Rabbit Monoclonal

Clone ID: R05-3A6

MW: Calculated MW: 45 kDa; Observed MW: 45 kDa

Isotype: IgG

Purification: Affinity Purified

Species Reactivity: Human

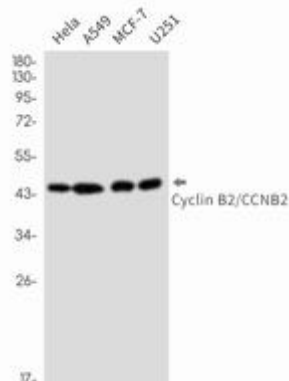
Conjugation: Unconjugated

Modification: Unmodified

Constituents: PBS (without Mg²⁺ and Ca²⁺), pH 7.3 containing 50% glycerol, 0.5% BSA and 0.02% sodium azide

Research Areas: Cell Biology

Storage & Shipping: Store at -20°C. Avoid repeated freezing and thawing



Western blot analysis of Cyclin B2/CCNB2 in HeLa, A549, MCF-7, U251 lysates using Cyclin B2 antibody.



Product Description

Pioneering GTPase and Oncogene Product Development since 2010
