

## CYCLOOXYGENASE 1 RABBIT MAB

**Cat.#:** N262056

**Product Name:** Anti-Cyclooxygenase 1 Rabbit Monoclonal Antibody

**Synonyms:** PTGS1; COX1; Prostaglandin G/H synthase 1; Cyclooxygenase-1; COX-1; Prostaglandin H2 synthase 1; PGH synthase 1; PGHS-1; PHS 1; Prostaglandin-endoperoxide synthase 1

**UNIPROT ID:** P23219

**Background:** Cyclooxygenase-1 May play an important role in regulating or promoting cell proliferation in some normal and neoplastically transformed cells. Belongs to the prostaglandin G/H synthase family. Homodimer. 2 isoforms of the human protein are produced by alternative splicing.

**Immunogen:** A synthetic peptide of human COX1/Cyclooxygenase 1

**Applications:** WB,IHC-F,IHC-P,ICC/IF,IP

**Recommended Dilutions:** WB: 1/500-1/1000 IHC: 1/50-1/100 IF: 1/50-1/200 IP: 1/20

**Host Species:** Rabbit

**Clonality:** Rabbit Monoclonal

**Clone ID:** R02-6G4

**MW:** Calculated MW: 69 kDa; Observed MW: 69 kDa

**Isotype:** IgG

**Purification:** Affinity Purified

**Species Reactivity:** Human,Mouse,Rat

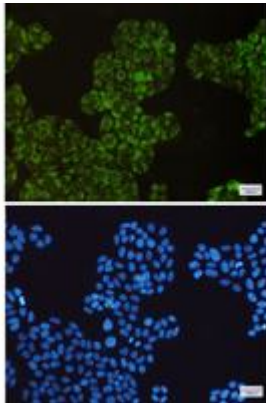
**Conjugation:** Unconjugated

**Modification:** Unmodified

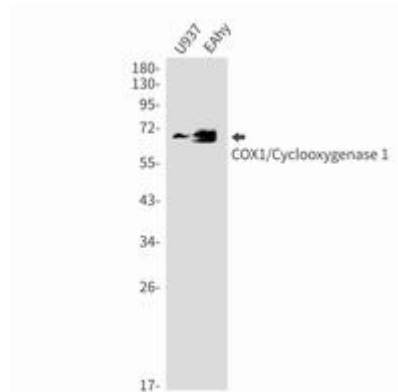
**Constituents:** PBS (without Mg<sup>2+</sup> and Ca<sup>2+</sup>), pH 7.3 containing 50% glycerol, 0.5% BSA and 0.02% sodium azide

**Research Areas:** Immunology

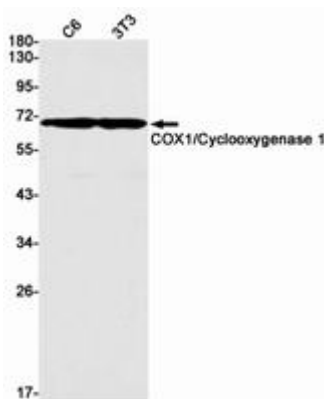
**Storage & Shipping:** Store at -20°C. Avoid repeated freezing and thawing



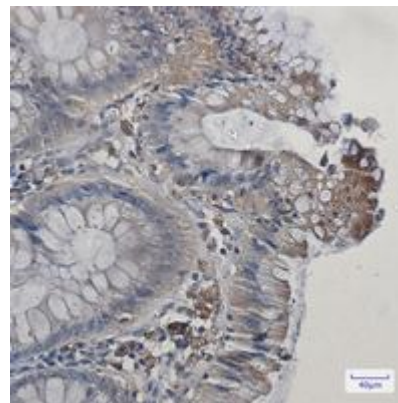
Immunocytochemistry analysis of COX1/Cyclooxygenase 1 (green) in U937, HeLa using COX1/Cyclooxygenase 1 antibody, and DAPI (blue)



Western blot analysis of COX1/Cyclooxygenase 1 in U937, EAhy lysates using Cyclooxygenase 1 antibody.



Western blot analysis of COX1/Cyclooxygenase 1 in C6, 3T3 lysates using COX1/Cyclooxygenase 1 antibody.



Immunohistochemistry analysis of paraffin-embedded Human colon cancer using COX1/Cyclooxygenase 1 antibody. High-pressure and temperature Sodium Citrate pH 6.0 was used for antigen retrieval.