

## CYCLOPHILIN B (5F10) MOUSE MAB

**Cat.#:** N261383

**Product Name:** Anti-Cyclophilin B (5F10) Mouse Monoclonal Antibody

**Synonyms:** PPIB; CYPB; Peptidyl-prolyl cis-trans isomerase B; PPIase B; CYP-S1; Cyclophilin B; Rotamase B; S-cyclophilin; SCYLP

**UNIPROT ID:** P23284

**Background:** PPIases accelerate the folding of proteins. It catalyzes the cis-trans isomerization of proline imidic peptide bonds in oligopeptides.

**Immunogen:** Synthetic peptide conjugated to KLH.

**Applications:** WB,IHC-P

**Recommended Dilutions:** WB: 1/500-1/1000 IHC: 1/50-1/100

**Host Species:** Mouse

**Clonality:** Mouse Monoclonal

**Clone ID:** 5F10-8G2-2D9

**MW:** Calculated MW: 24 kDa; Observed MW: 24 kDa

**Isotype:** IgG1

**Purification:** Affinity Purified

**Species Reactivity:** Human,Rat,Mouse

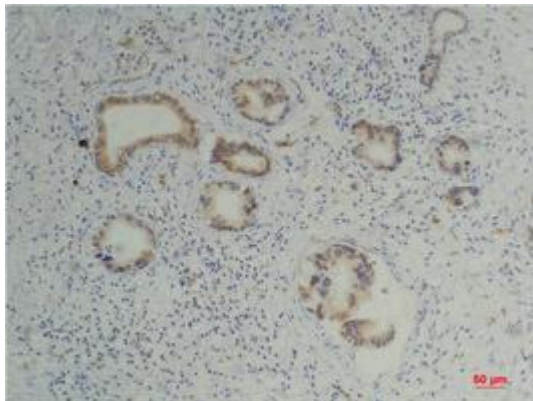
**Conjugation:** Unconjugated

**Modification:** Unmodified

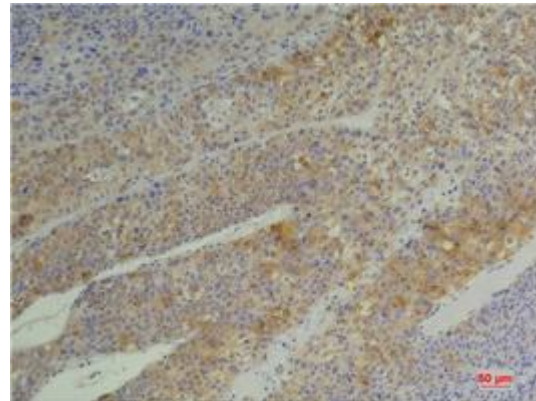
**Constituents:** PBS (without Mg<sup>2+</sup> and Ca<sup>2+</sup>), pH 7.3 containing 50% glycerol, 0.5% BSA and 0.02% sodium azide

**Research Areas:** Immunology

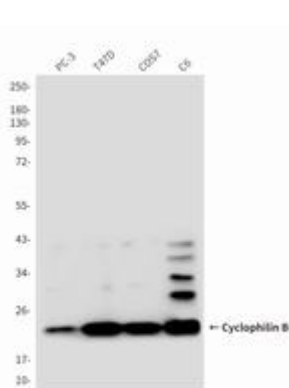
**Storage & Shipping:** Store at -20°C. Avoid repeated freezing and thawing



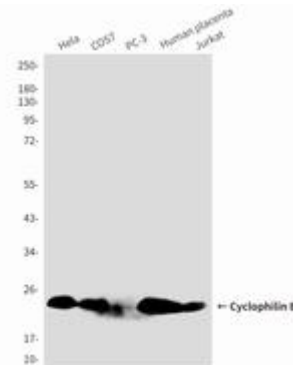
Immunohistochemical analysis of paraffin-embedded Human tonsils using Cyclophilin B (5F10) antibody. High-pressure and temperature Sodium Citrate pH 6.0 was used for antigen retrieval.



Immunohistochemistry analysis of paraffin-embedded Human Hepatocarcinoma using Cyclophilin B (5F10) antibody. High-pressure and temperature Sodium Citrate pH 6.0 was used for antigen retrieval.



Western blot analysis of Cyclophilin B (5F10) in PC-3, T47D, COS7, C6 lysates using Cyclophilin B (5F10) antibody



Western blot analysis of Cyclophilin B (5F10) in Hela, COS7, PC-3, Human placenta, Jurkat lysates using Cyclophilin B (5F10) antibody.