

CYCLOPHILIN F RABBIT MAB

Cat.#: N262095

Product Name: Anti-Cyclophilin F Rabbit Monoclonal Antibody

Synonyms: PPIF; CYP3; Peptidyl-prolyl cis-trans isomerase F; mitochondrial; PPIase F; Cyclophilin F; Rotamase F

UNIPROT ID: P30405

Background: PPIases accelerate the folding of proteins. It catalyzes the cis-trans isomerization of proline imidic peptide bonds in oligopeptides.

Immunogen: A synthetic peptide of human Cyclophilin F

Applications: WB,IHC-P

Recommended Dilutions: WB: 1/500-1/1000 IHC: 1/50-1/100

Host Species: Rabbit

Clonality: Rabbit Monoclonal

Clone ID: R02-619

MW: Calculated MW: 22 kDa; Observed MW: 18 kDa

Isotype: IgG

Purification: Affinity Purified

Species Reactivity: Human,Mouse,Rat

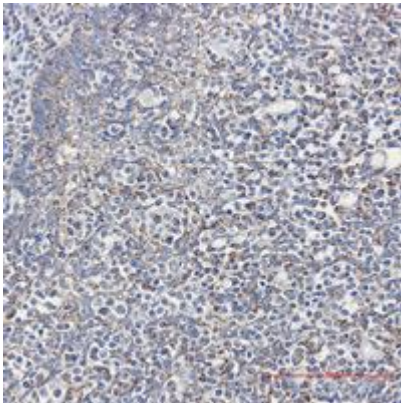
Conjugation: Unconjugated

Modification: Unmodified

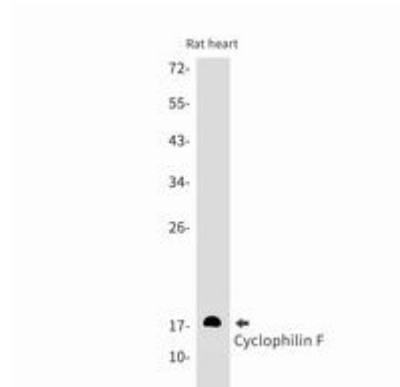
Constituents: PBS (without Mg²⁺ and Ca²⁺), pH 7.3 containing 50% glycerol, 0.5% BSA and 0.02% sodium azide

Research Areas: Immunology

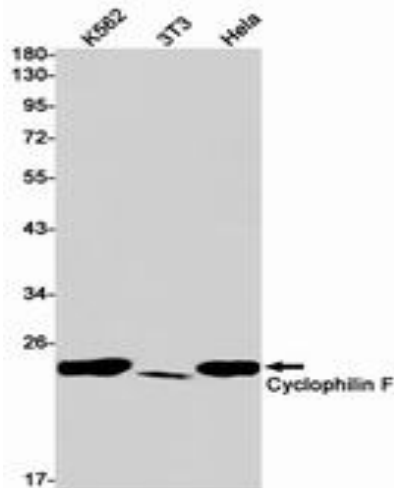
Storage & Shipping: Store at -20°C. Avoid repeated freezing and thawing



Immunohistochemistry analysis of paraffin-embedded Human tonsil using Cyclophilin F antibody. High-pressure and temperature Sodium Citrate pH 6.0 was used for antigen retrieval.



Western blot analysis of Cyclophilin F in rat heart lysates using Cyclophilin F antibody.



Western blot analysis of Cyclophilin F in K562, 3T3, HeLa lysates using Cyclophilin F antibody.