

CYP1A1 RABBIT PAB

Cat.#: S216461

Product Name: Anti-CYP1A1 Rabbit Polyclonal Antibody

Synonyms: AHH; AHRR; CYP1; CYP1; CYP1A1; P1-450; P450-C; P450DX

UNIPROT ID: P04798 (Gene Accession - BC023019)

Background: This gene, CYP1A1, encodes a member of the cytochrome P450 superfamily of enzymes. The cytochrome P450 proteins are monooxygenases which catalyze many reactions involved in drug metabolism and synthesis of cholesterol, steroids and other lipids. This protein localizes to the endoplasmic reticulum and its expression is induced by some polycyclic aromatic hydrocarbons (PAHs), some of which are found in cigarette smoke. The enzyme's endogenous substrate is unknown; however, it is able to metabolize some PAHs to carcinogenic intermediates. The gene has been associated with lung cancer risk. A related family member, CYP1A2, is located approximately 25 kb away from CYP1A1 on chromosome 15. Alternative splicing results in multiple transcript variants encoding distinct isoforms.

Immunogen: Fusion protein of human CYP1A1

Applications: ELISA, WB, IHC

Recommended Dilutions: IHC: 25-100;WB: 1000-5000;ELISA: 1000-5000

Host Species: Rabbit

Clonality: Rabbit Polyclonal

Isotype: Immunogen-specific rabbit IgG

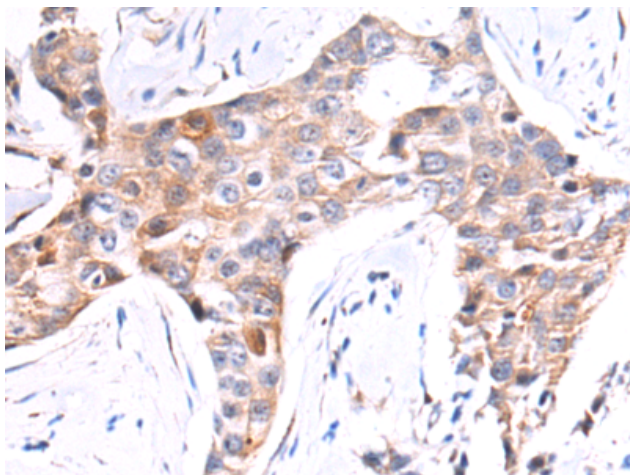
Purification: Antigen affinity purification

Species Reactivity: Human, Mouse, Rat

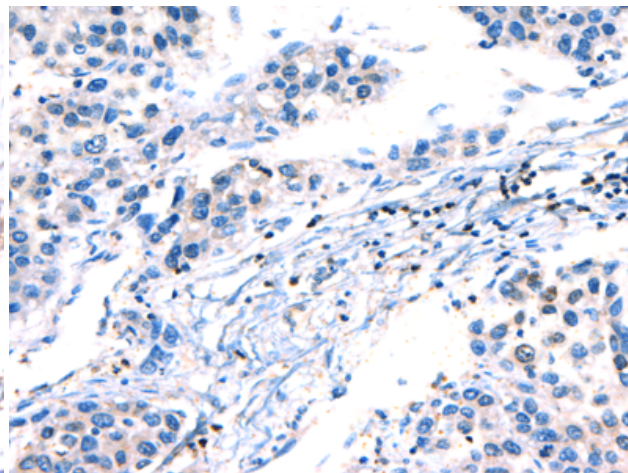
Constituents: PBS (without Mg²⁺ and Ca²⁺), pH 7.4, 150 mM NaCl, 0.05% Sodium Azide and 40% glycerol

Research Areas: Metabolism, Cancer, Cardiovascular

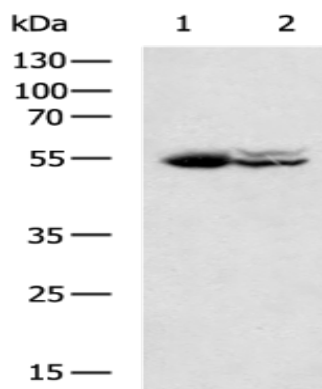
Storage & Shipping: Store at -20°C. Avoid repeated freezing and thawing



Immunohistochemistry analysis of paraffin embedded Human liver cancer tissue using 216461(CYP1A1 Antibody) at a dilution of 1/25(Cytoplasm).



In comparison with the IHC on the left, the same paraffin-embedded Human liver cancer tissue is first treated with the fusion protein and then with 216461(Anti-CYP1A1 Antibody) at dilution 1/25.



Gel: 8%SDS-PAGE, Lysate: 40 µg;
 Lane 1-2: Mouse liver tissue, Mouse lung tissue lysates;
 Primary antibody: 216461(CYP1A1 Antibody) at dilution 1/1000;
 Secondary antibody: HRP-conjugated Goat anti rabbit IgG at 1/5000 dilution;
 Exposure time: 10 seconds