

CYP20A1 RABBIT PAB

Cat.#: S218562

Product Name: Anti-CYP20A1 Rabbit Polyclonal Antibody

Synonyms: CYP-M

UNIPROT ID: Q6UW02 (Gene Accession - BC033752)

Background: This gene encodes a member of the cytochrome P450 superfamily of enzymes. The cytochrome P450 proteins are monooxygenases that catalyze many reactions involved in drug metabolism and synthesis of cholesterol, steroids and other lipids. This protein lacks one amino acid of the conserved heme binding site. It also lacks the conserved I-helix motif AGX(D,E)T, suggesting that its substrate may carry its own oxygen.

Immunogen: Fusion protein of human CYP20A1

Applications: ELISA, IHC

Recommended Dilutions: IHC: 50-200; ELISA: 5000-10000

Host Species: Rabbit

Clonality: Rabbit Polyclonal

Isotype: Immunogen-specific rabbit IgG

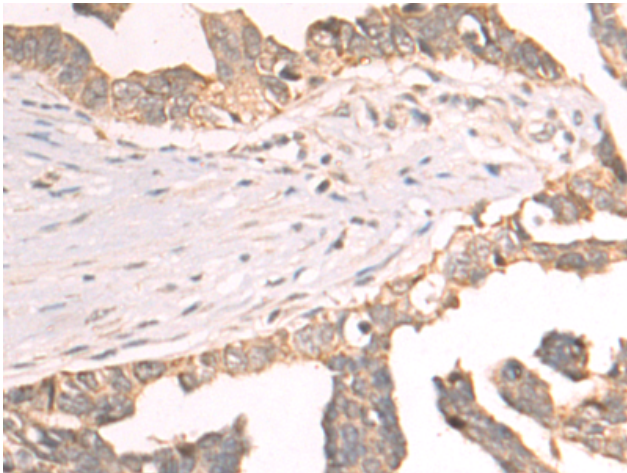
Purification: Antigen affinity purification

Species Reactivity: Human

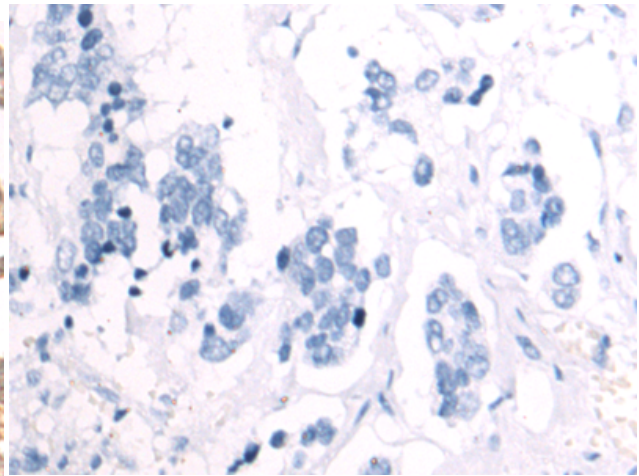
Constituents: PBS (without Mg²⁺ and Ca²⁺), pH 7.4, 150 mM NaCl, 0.05% Sodium Azide and 40% glycerol

Research Areas: Metabolism, Cell Biology

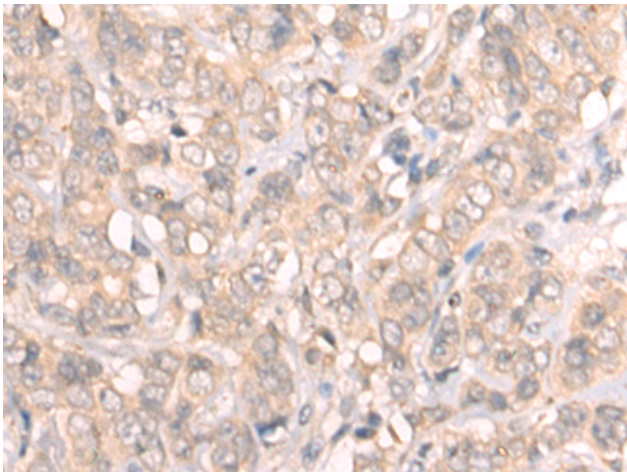
Storage & Shipping: Store at -20°C. Avoid repeated freezing and thawing



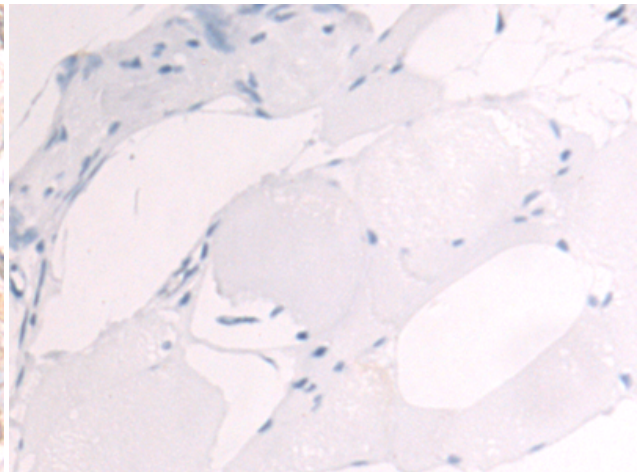
Immunohistochemistry analysis of paraffin embedded Human colorectal cancer tissue using 218562(CYP20A1 Antibody) at a dilution of 1/55(Cytoplasm and Cell membrane).



In comparison with the IHC on the left, the same paraffin-embedded Human colorectal cancer tissue is first treated with the fusion protein and then with 218562(Anti-CYP20A1 Antibody) at dilution 1/55.



The image on the left is immunohistochemistry of paraffin-embedded Human breast cancer tissue using 218562(Anti-CYP20A1 Antibody) at a dilution of 1/55.



In comparison with the IHC on the left, the same paraffin-embedded Human breast cancer tissue is first treated with fusion protein and then with D224705(Anti-CYP20A1 Antibody) at dilution 1/55.