

CYP26C1 RABBIT PAB

Cat.#: S221868

Product Name: Anti-CYP26C1 Rabbit Polyclonal Antibody

Synonyms: FFDD4

UNIPROT ID: Q6V0L0 (Gene Accession - NP_899230)

Background: This gene encodes a member of the cytochrome P450 superfamily of enzymes. The cytochrome P450 proteins are monooxygenases which catalyze many reactions involved in drug metabolism and synthesis of cholesterol, steroids and other lipids. This enzyme is involved in the catabolism of all-trans- and 9-cis-retinoic acid, and thus contributes to the regulation of retinoic acid levels in cells and tissues. This gene is adjacent to a related gene on chromosome 10q23.33.

Immunogen: Synthetic peptide of human CYP26C1

Applications: ELISA, IHC

Recommended Dilutions: IHC: Oct-50; ELISA: 5000-10000

Host Species: Rabbit

Clonality: Rabbit Polyclonal

Isotype: Immunogen-specific rabbit IgG

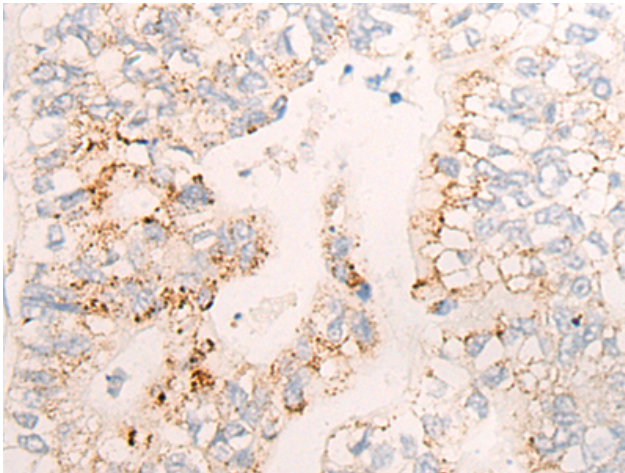
Purification: Antigen affinity purification

Species Reactivity: Human

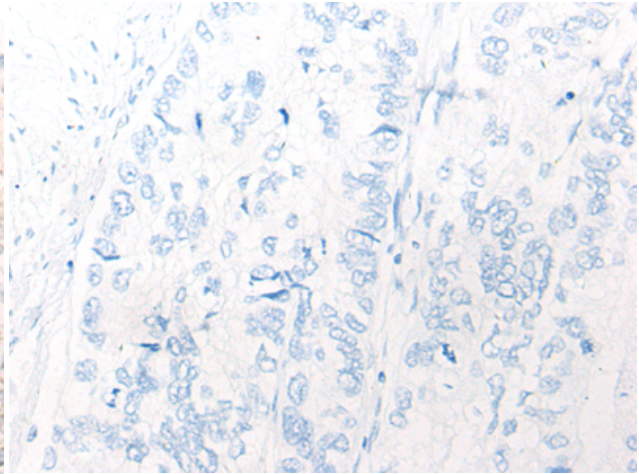
Constituents: PBS (without Mg²⁺ and Ca²⁺), pH 7.4, 150 mM NaCl, 0.05% Sodium Azide and 40% glycerol

Research Areas: Cardiovascular

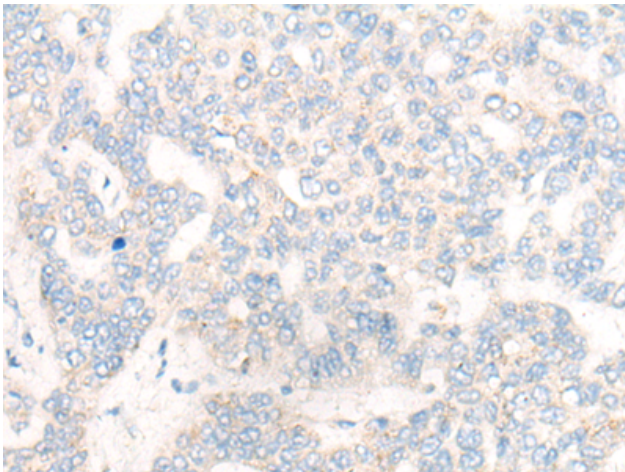
Storage & Shipping: Store at -20°C. Avoid repeated freezing and thawing



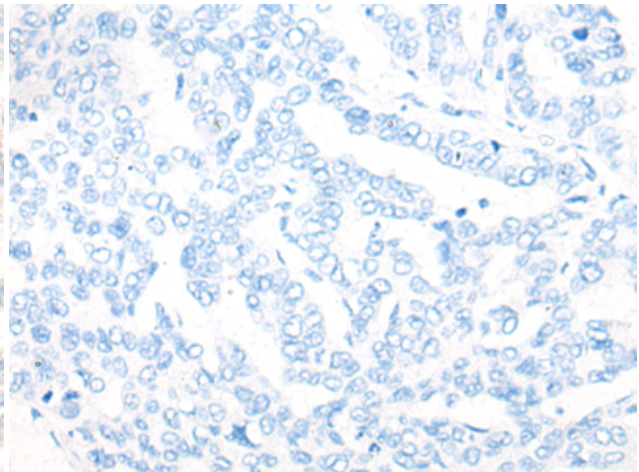
Immunohistochemistry analysis of paraffin embedded Human gastric cancer tissue using 221868(CYP26C1 Antibody) at a dilution of 1/20(Cell membrane).



In comparison with the IHC on the left, the same paraffin-embedded Human gastric cancer tissue is first treated with the synthetic peptide and then with 221868(Anti-CYP26C1 Antibody) at dilution 1/20.



The image on the left is immunohistochemistry of paraffin-embedded Human liver cancer tissue using 221868(Anti-CYP26C1 Antibody) at a dilution of 1/20.



In comparison with the IHC on the left, the same paraffin-embedded Human liver cancer tissue is first treated with synthetic peptide and then with D263652(Anti-CYP26C1 Antibody) at dilution 1/20.