

CYP2W1 RABBIT PAB

Cat.#: S217321

Product Name: Anti-CYP2W1 Rabbit Polyclonal Antibody

Synonyms:

UNIPROT ID: Q8TAV3 (Gene Accession - BC025761)

Background: This gene encodes a member of the cytochrome P450 superfamily of enzymes. The cytochrome P450 proteins are monooxygenases which catalyze many reactions involved in drug metabolism and synthesis of cholesterol, steroids and other lipids.

Immunogen: Fusion protein of human CYP2W1

Applications: ELISA, IHC

Recommended Dilutions: IHC: 50-200; ELISA: 2000-5000

Host Species: Rabbit

Clonality: Rabbit Polyclonal

Isotype: Immunogen-specific rabbit IgG

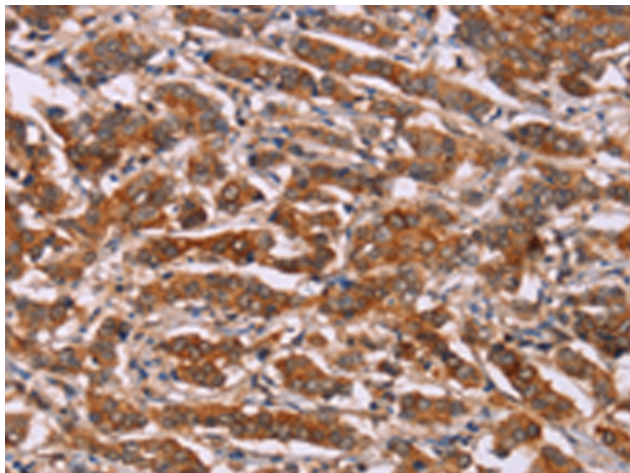
Purification: Antigen affinity purification

Species Reactivity: Human, Mouse

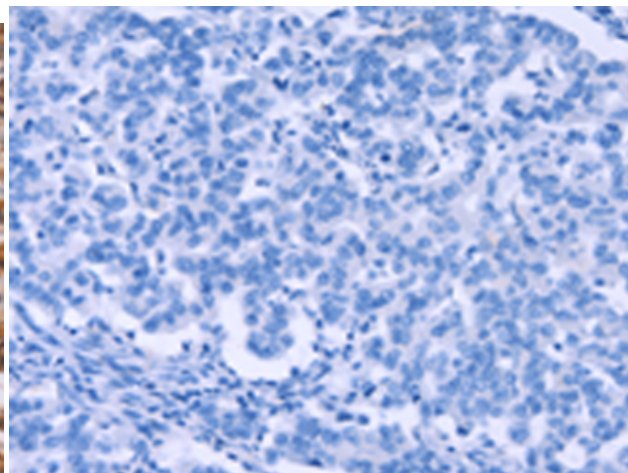
Constituents: PBS (without Mg²⁺ and Ca²⁺), pH 7.4, 150 mM NaCl, 0.05% Sodium Azide and 40% glycerol

Research Areas: Cancer, Metabolism, Cardiovascular

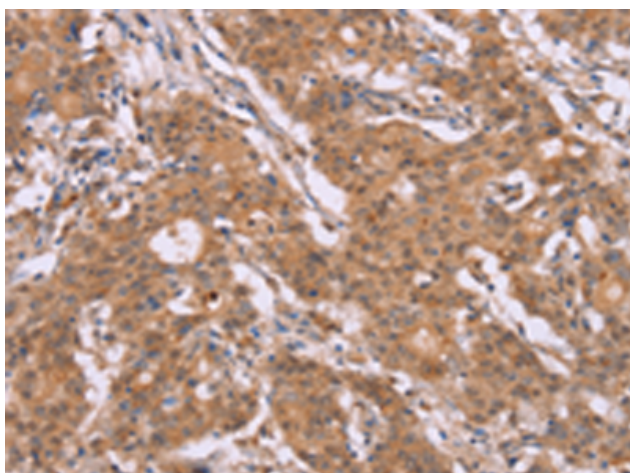
Storage & Shipping: Store at -20°C. Avoid repeated freezing and thawing



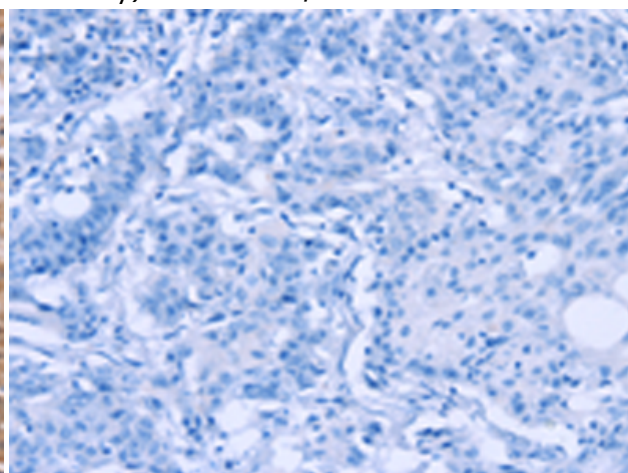
Immunohistochemistry analysis of paraffin embedded Human breast cancer tissue using 217321(CYP2W1 Antibody) at a dilution of 1/25(Cytoplasm).



In comparison with the IHC on the left, the same paraffin-embedded Human breast cancer tissue is first treated with the fusion protein and then with 217321(Anti-CYP2W1 Antibody) at dilution 1/25.



The image on the left is immunohistochemistry of paraffin-embedded Human gastric cancer tissue using 217321(Anti-CYP2W1 Antibody) at a dilution of 1/25.



In comparison with the IHC on the left, the same paraffin-embedded Human gastric cancer tissue is first treated with fusion protein and then with D222178(Anti-CYP2W1 Antibody) at dilution 1/25.