

## CYSTATHIONASE RABBIT MAB

**Cat.#:** N263292

**Product Name:** Anti-Cystathionase Rabbit Monoclonal Antibody

**Synonyms:** CTH; Cystathionine gamma lyase; Cysteine desulfhydrase; Gamma cystathionase; Homoserine deaminase

**UNIPROT ID:** P32929

**Background:** Catalyzes the last step in the transsulfuration pathway from methionine to cysteine. Has broad substrate specificity. Converts cystathionine to cysteine, ammonia and 2-oxobutanoate.

**Immunogen:** A synthetic peptide of human Cystathionase/CTH

**Applications:** WB,IP

**Recommended Dilutions:** WB: 1/500-1/1000 IP: 1/20

**Host Species:** Rabbit

**Clonality:** Rabbit Monoclonal

**Clone ID:** R06-5A5

**MW:** Calculated MW: 45 kDa; Observed MW: 45 kDa

**Isotype:** IgG

**Purification:** Affinity Purified

**Species Reactivity:** Human

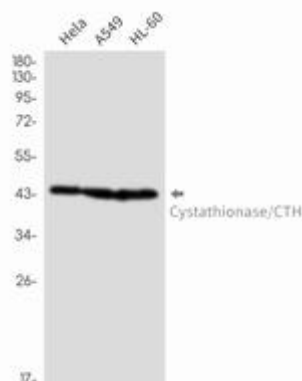
**Conjugation:** Unconjugated

**Modification:** Unmodified

**Constituents:** PBS (without Mg<sup>2+</sup> and Ca<sup>2+</sup>), pH 7.3 containing 50% glycerol, 0.5% BSA and 0.02% sodium azide

**Research Areas:** Signal Transduction

**Storage & Shipping:** Store at -20°C. Avoid repeated freezing and thawing



Western blot analysis of Cystathionase/CTH in HeLa, A549, HL-60 lysates using Cystathionase antibody.



# Product Description

Pioneering GTPase and Oncogene Product Development since 2010

---