

CYTOCHROME B RABBIT PAB

Cat.#: N225235

Product Name: Anti-Cytochrome B Rabbit pAb

Synonyms: Cytochrome b (Complex III subunit 3; Complex III subunit III; Cytochrome b-c1 complex subunit 3; Ubiquinol-cytochrome-c reductase complex cytochrome b subunit)

UNIPROT ID: P00156

Background: Component of the ubiquinol-cytochrome c reductase complex (complex III or cytochrome b-c1 complex) that is part of the mitochondrial respiratory chain.

Immunogen: Synthesized peptide derived from human Cytochrome b. at AA range: 331-380

Applications: WB,ELISA

Recommended Dilutions: WB: 1/500-1/1000 ELISA: 1/10000

Host Species: Rabbit

Clonality: Rabbit Polyclonal

Clone ID: -

MW: Calculated MW: 43 kDa; Observed MW: 48 kDa

Isotype: IgG

Purification: Affinity Purified

Species Reactivity: Human,Mouse

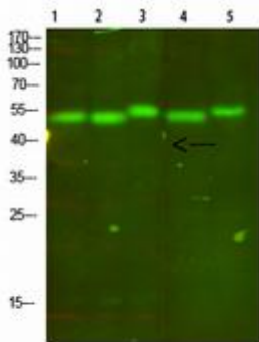
Conjugation: Unconjugated

Modification: Unmodified

Constituents: PBS (without Mg²⁺ and Ca²⁺), pH 7.3 containing 50% glycerol, 0.5% BSA and 0.02% sodium azide

Research Areas: Signal Transduction

Storage & Shipping: Store at -20°C. Avoid repeated freezing and thawing



Western blot analysis of Cytochrome B in mouse lung, mouse brain 3, mouse spleen 4, mouse kidney 5, mouse heart lysates using Cytochrome B antibody.