

## CYTOCHROME C OXIDASE SUBUNIT VIC RABBIT MAB

**Cat.#:** N262099

**Product Name:** Anti-Cytochrome C Oxidase subunit Vic Rabbit Monoclonal Antibody

**Synonyms:** cytochrome c oxidase subunit 6C

**UNIPROT ID:** P09669

**Background:** This protein is one of the nuclear-coded polypeptide chains of cytochrome c oxidase, the terminal oxidase in mitochondrial electron transport.

**Immunogen:** A synthetic peptide of human Cytochrome C Oxidase subunit Vic

**Applications:** WB,IHC-P

**Recommended Dilutions:** WB: 1/500-1/1000 IHC: 1/50-1/100

**Host Species:** Rabbit

**Clonality:** Rabbit Monoclonal

**Clone ID:** R06-1D9

**MW:** Calculated MW: 9 kDa; Observed MW: 12 kDa

**Isotype:** IgG

**Purification:** Affinity Purified

**Species Reactivity:** Human,Mouse,Rat

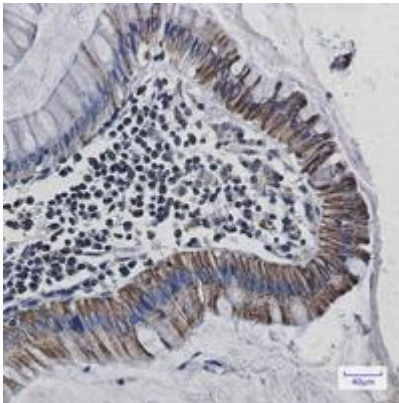
**Conjugation:** Unconjugated

**Modification:** Unmodified

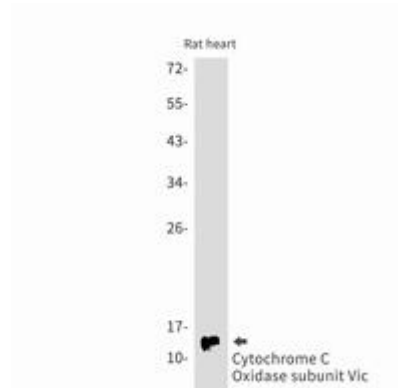
**Constituents:** PBS (without Mg<sup>2+</sup> and Ca<sup>2+</sup>), pH 7.3 containing 50% glycerol, 0.5% BSA and 0.02% sodium azide

**Research Areas:** Cardiovascular

**Storage & Shipping:** Store at -20°C. Avoid repeated freezing and thawing



Immunohistochemistry analysis of paraffin-embedded Human colon cancer using Cytochrome C Oxidase subunit Vic antibody. High-pressure and temperature Sodium Citrate pH 6.0 was used for antigen retrieval.



Western blot analysis of Cytochrome C Oxidase subunit Vic in rat heart lysates using Cytochrome C Oxidase subunit Vic antibody.



Western blot analysis of Cytochrome C Oxidase subunit Vic in 3T3, Hela lysates using Cytochrome C Oxidase subunit Vic antibody.