

## CYTOCHROME P450 17A1 RABBIT MAB

**Cat.#:** N262101

**Product Name:** Anti-Cytochrome P450 17A1 Rabbit Monoclonal Antibody

**Synonyms:** CPT7; CYP17; P450C17; S17AH; CYP17A1

**UNIPROT ID:** P05093

**Background:** Conversion of pregnenolone and progesterone to their 17-alpha-hydroxylated products and subsequently to dehydroepiandrosterone (DHEA) and androstenedione.

**Immunogen:** A synthetic peptide of human Cytochrome P450 17A1

**Applications:** WB,IHC-F,IHC-P,ICC/IF,IP

**Recommended Dilutions:** WB: 1/500-1/1000 IHC: 1/50-1/100 IF: 1/50-1/200 IP: 1/20

**Host Species:** Rabbit

**Clonality:** Rabbit Monoclonal

**Clone ID:** R08-2J5

**MW:** Calculated MW: 57 kDa; Observed MW: 57 kDa

**Isotype:** IgG

**Purification:** Affinity Purified

**Species Reactivity:** Human,Mouse,Rat

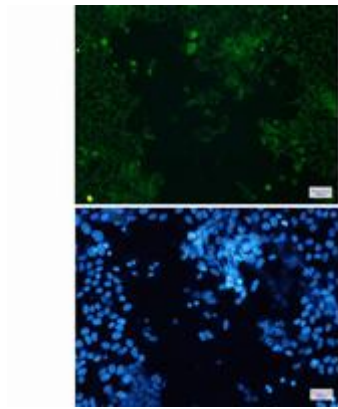
**Conjugation:** Unconjugated

**Modification:** Unmodified

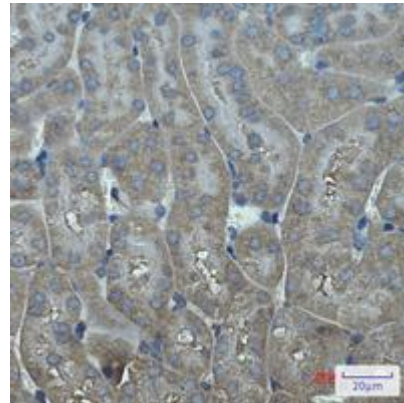
**Constituents:** PBS (without Mg<sup>2+</sup> and Ca<sup>2+</sup>), pH 7.3 containing 50% glycerol, 0.5% BSA and 0.02% sodium azide

**Research Areas:** Cardiovascular

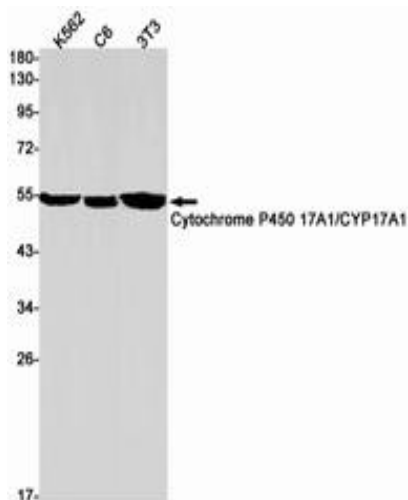
**Storage & Shipping:** Store at -20°C. Avoid repeated freezing and thawing



Immunocytochemistry analysis of Cytochrome P450 17A1 (green) in Hela cells using Cytochrome P450 17A1 antibody, and DAPI (blue)



Immunohistochemistry analysis of paraffin-embedded mouse kidney using Cytochrome P450 17A1 antibody. High-pressure and temperature Sodium Citrate pH 6.0 was used for antigen retrieval.



Western blot analysis of Cytochrome P450 17A1/CYP17A1 in K562, C6, 3T3 lysates using Cytochrome P450 17A1/CYP17A1 antibody.