

CYTOCHROME P450 2D6 RABBIT MAB

Cat.#: N263291

Product Name: Anti-Cytochrome P450 2D6 Rabbit Monoclonal Antibody

Synonyms: CYP2D6; CYP2DL1; Cytochrome P450 2D6; CYP11D6; Cytochrome P450-DB1; Debrisoquine 4-hydroxylase

UNIPROT ID: P10635

Background: Cytochrome P450 2D6 is a member of the cytochrome P450 superfamily of enzymes. The cytochrome P450 proteins are monooxygenases which catalyze many reactions involved in drug metabolism and synthesis of cholesterol, steroids and other lipids.

Immunogen: Recombinant protein of human CYP2D6

Applications: WB,IHC-F,IHC-P,ICC/IF

Recommended Dilutions: WB: 1/500-1/1000 IHC: 1/50-1/100 IF: 1/50-1/200

Host Species: Rabbit

Clonality: Rabbit Monoclonal

Clone ID: R07-3G8

MW: Calculated MW: 56 kDa; Observed MW: 50 kDa

Isotype: IgG

Purification: Affinity Purified

Species Reactivity: Human

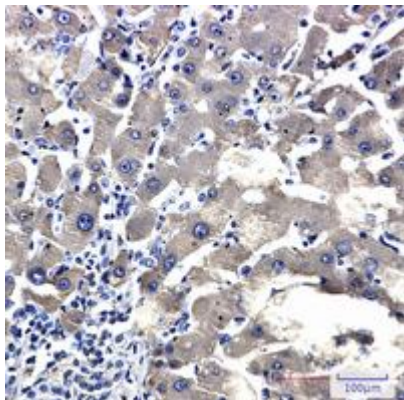
Conjugation: Unconjugated

Modification: Unmodified

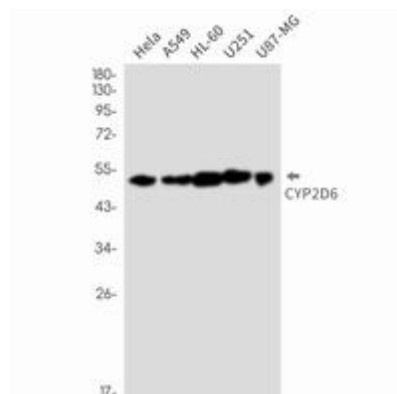
Constituents: PBS (without Mg²⁺ and Ca²⁺), pH 7.3 containing 50% glycerol, 0.5% BSA and 0.02% sodium azide

Research Areas: Cardiovascular

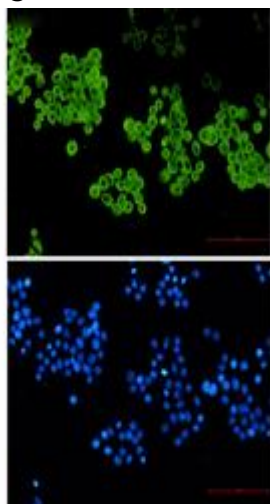
Storage & Shipping: Store at -20°C. Avoid repeated freezing and thawing



Immunohistochemistry analysis of paraffin-embedded liver cancer using CYP2D6 antibody. High-pressure and temperature Sodium Citrate pH 6.0 was used for antigen retrieval.



Western blot analysis of CYP2D6 in HeLa, A549, HL-60, U251, U87-MG lysates using Cytochrome P450 2D6 antibody.



Immunocytochemistry analysis of CYP2D6 (green) in HeLa using CYP2D6 antibody, and DAPI (blue)