

## CYTOCHROME P450 4Z1 RABBIT PAB

**Cat.#:** N225491

**Product Name:** Anti-Cytochrome P450 4Z1 Rabbit pAb

**Synonyms:** CYP4A20

**UNIPROT ID:** Q86W10

**Background:** A cytochrome P450 monooxygenase that catalyzes the in-chain oxidation of fatty acids.

**Immunogen:** The antiserum was produced against synthesized peptide derived from human Cytochrome P450 4Z1. AA range:71-120

**Applications:** IHC-P,IHC-F,ICC/IF,ELISA

**Recommended Dilutions:** IHC: 1/50-1/100 IF: 1/50-1/200 ELISA: 1/10000

**Host Species:** Rabbit

**Clonality:** Rabbit Polyclonal

**Clone ID:** -

**MW:** -

**Isotype:** IgG

**Purification:** Affinity Chromatography

**Species Reactivity:** Human

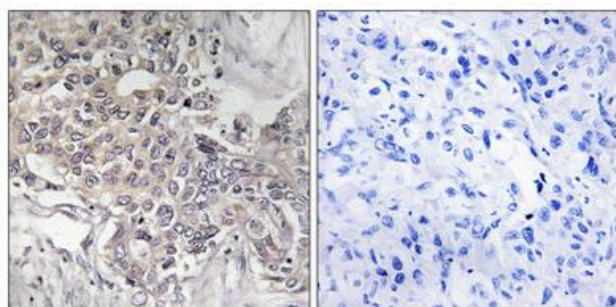
**Conjugation:** Unconjugated

**Modification:** Unmodified

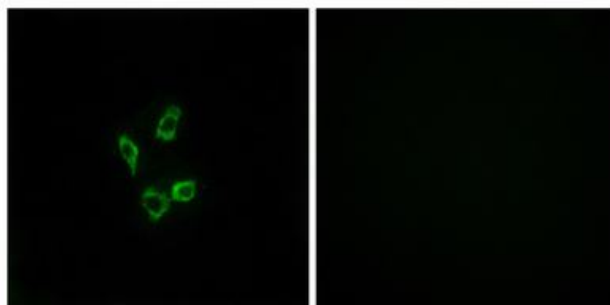
**Constituents:** PBS (without Mg<sup>2+</sup> and Ca<sup>2+</sup>), pH 7.3 containing 50% glycerol, 0.5% BSA and 0.02% sodium azide

**Research Areas:** Cardiovascular

**Storage & Shipping:** Store at -20°C. Avoid repeated freezing and thawing



Immunohistochemical analysis of paraffin-embedded Human tonsils using Cytochrome P450 4Z1 antibody. Sample with blocking peptide on the right. High-pressure and temperature Sodium Citrate pH 6.0 was used for antigen retrieval.



Immunofluorescence analysis of Cytochrome P450 4Z1 in HUVEC cells using Cytochrome P450 4Z1 antibody. Sample with blocking peptide on the right.