

## CYTOKERATIN 16 RABBIT MAB

**Cat.#:** N261643

**Product Name:** Anti-Cytokeratin 16 Rabbit Monoclonal Antibody

**Synonyms:** KRT16; KRT16A; Keratin; type I cytoskeletal 16; Cytokeratin-16; CK-16; Keratin-16; K16

**UNIPROT ID:** P08779

**Background:** K16 a type I cytoskeletal keratin. The keratins are intermediate filament proteins responsible for the structural integrity of epithelial cells and are subdivided into cytokeratins and hair keratins. There are two types of cytoskeletal and microfibrillar keratin: type I (acidic; 40–55 kDa) [K9 to K20] and type II (neutral to basic; 56–70 kDa) [K1 to K8].

**Immunogen:** Recombinant protein of human Cytokeratin 16

**Applications:** WB, IHC-P

**Recommended Dilutions:** WB: 1/500–1/1000 IHC: 1/50–1/100

**Host Species:** Rabbit

**Clonality:** Rabbit Monoclonal

**Clone ID:** R02-5F8

**MW:** Calculated MW: 51 kDa; Observed MW: 51 kDa

**Isotype:** IgG

**Purification:** Affinity Purified

**Species Reactivity:** Human

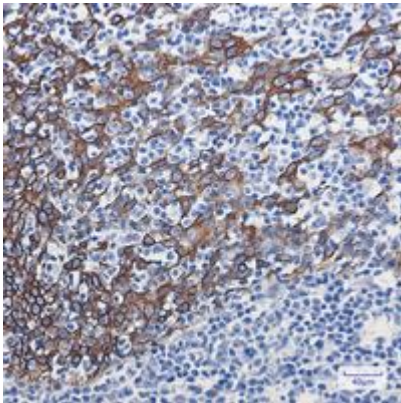
**Conjugation:** Unconjugated

**Modification:** Unmodified

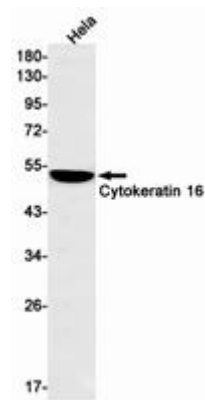
**Constituents:** PBS (without Mg<sup>2+</sup> and Ca<sup>2+</sup>), pH 7.3 containing 50% glycerol, 0.5% BSA and 0.02% sodium azide

**Research Areas:** Signal Transduction

**Storage & Shipping:** Store at –20°C. Avoid repeated freezing and thawing



Immunohistochemistry analysis of paraffin-embedded Human tonsil using Cytokeratin 16 antibody. High-pressure and temperature Sodium Citrate pH 6.0 was used for antigen retrieval.



Western blot analysis of Cytokeratin 16 in Hela lysates using Cytokeratin 16 antibody.