

## CYTOKERATIN 19 (10G10) MOUSE MAB

**Cat.#:** N261214

**Product Name:** Anti-Cytokeratin 19 (10G10) Mouse Monoclonal Antibody

**Synonyms:** KRT19; Keratin; type I cytoskeletal 19; Cytokeratin-19; CK-19; Keratin-19; K19

**UNIPROT ID:** P08727

**Background:** Involved in the organization of myofibers. Together with KRT8, helps to link the contractile apparatus to dystrophin at the costameres of striated muscle.

**Immunogen:** Synthetic Peptide of CK19

**Applications:** WB,IHC-P

**Recommended Dilutions:** WB: 1/500-1/1000 IHC: 1/50-1/100

**Host Species:** Mouse

**Clonality:** Mouse Monoclonal

**Clone ID:** 10G10-6A4-9G10

**MW:** Calculated MW: 44 kDa; Observed MW: 44 kDa

**Isotype:** IgG1

**Purification:** Affinity Purified

**Species Reactivity:** Human,Mouse,Rat

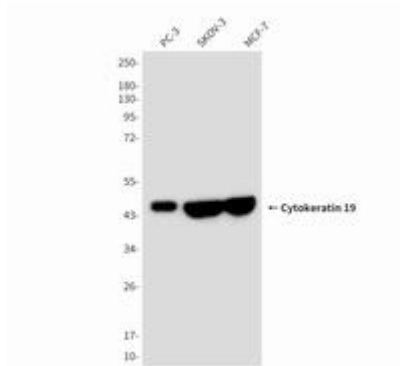
**Conjugation:** Unconjugated

**Modification:** Unmodified

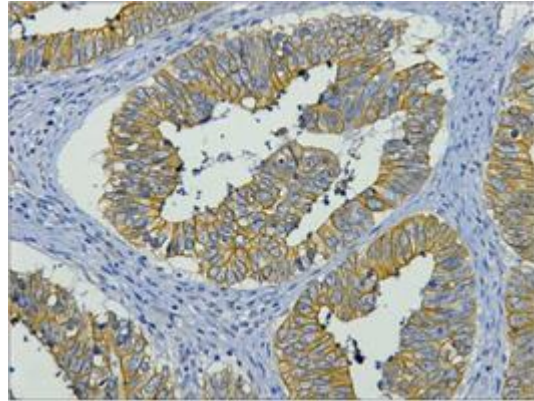
**Constituents:** PBS (without Mg<sup>2+</sup> and Ca<sup>2+</sup>), pH 7.3 containing 50% glycerol, 0.5% BSA and 0.02% sodium azide

**Research Areas:** Signal Transduction

**Storage & Shipping:** Store at -20°C. Avoid repeated freezing and thawing



Western blot analysis of Cytokeratin 19 (10G10) in PC-3, SKOV-3 and MCF-7 lysates using Cytokeratin 19 (10G10) antibody



Immunohistochemistry analysis of paraffin-embedded staining of Human colon cancer tissue using Cytokeratin 19 (10G10) antibody. High-pressure and temperature Sodium Citrate pH 6.0 was used for antigen retrieval.