

CYTOKERATIN 19 RABBIT MAB

Cat.#: N262107

Product Name: Anti-Cytokeratin 19 Rabbit Monoclonal Antibody

Synonyms: KRT19; Keratin; type I cytoskeletal 19; Cytokeratin-19; CK-19; Keratin-19; K19

UNIPROT ID: P08727

Background: Involved in the organization of myofibers. Together with KRT8, helps to link the contractile apparatus to dystrophin at the costameres of striated muscle.

Immunogen: A synthetic peptide of human Cytokeratin 19

Applications: WB,IHC-F,IHC-P,ICC/IF,IP

Recommended Dilutions: WB: 1/500-1/1000 IHC: 1/50-1/100 IF: 1/50-1/200 IP: 1/20

Host Species: Rabbit

Clonality: Rabbit Monoclonal

Clone ID: R07-2G5

MW: Calculated MW: 44 kDa; Observed MW: 41 kDa

Isotype: IgG

Purification: Affinity Purified

Species Reactivity: Human,Rat

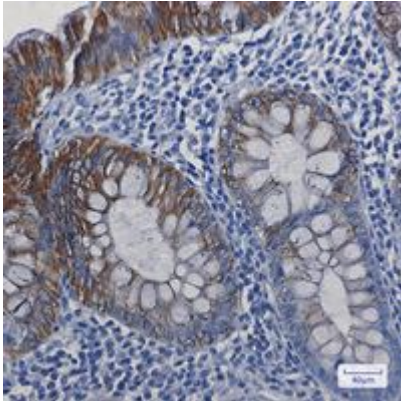
Conjugation: Unconjugated

Modification: Unmodified

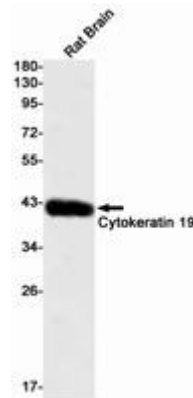
Constituents: PBS (without Mg²⁺ and Ca²⁺), pH 7.3 containing 50% glycerol, 0.5% BSA and 0.02% sodium azide

Research Areas: Signal Transduction

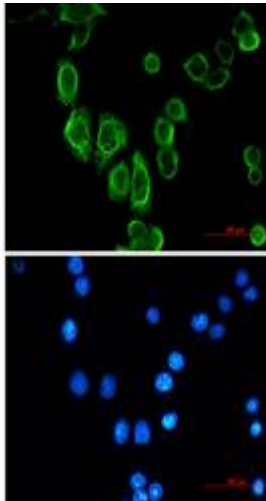
Storage & Shipping: Store at -20°C. Avoid repeated freezing and thawing



Immunohistochemistry analysis of paraffin-embedded Human colon cancer using Cytokeratin 19 antibody. High-pressure and temperature Sodium Citrate pH 6.0 was used for antigen retrieval.



Western blot analysis of Cytokeratin 19 in rat Brain lysates using Cytokeratin 19 antibody.



Immunocytochemistry analysis of Cytokeratin 19 (green) in MCF-7 using Cytokeratin 19 antibody, and DAPI (blue)