

CYTOKERATIN 6 (1A5) MOUSE MAB

Cat.#: N261228

Product Name: Anti-Cytokeratin 6 (1A5) Mouse Monoclonal Antibody

Synonyms: CK 6A; CK 6B; CK 6C; CK 6D; CK 6E; CK-6C; CK-6E; K6a keratin; K6b keratin; K6C; K6c keratin; K6d keratin; K6e keratin; Keratin; KRT6A; KRT6B; KRT6C; KRT6D; KRT6E

UNIPROT ID: P02538/P04259/P48668

Background: There are at least six isoforms of human type II keratin-6 (K6). There are two types of cytoskeletal and microfibrillar keratin, I (acidic) and II (neutral to basic) (40–55 and 56–70 kDa, respectively).

Immunogen: Synthetic Peptide of Cytokeratin 6

Applications: WB,IHC-P,ICC/IF

Recommended Dilutions: WB: 1/500-1/1000 IHC: 1/50-1/100 IF: 1/50-1/200

Host Species: Mouse

Clonality: Mouse Monoclonal

Clone ID: 1A5-9F5-6E9

MW: Calculated MW: 60 kDa; Observed MW: 56-60 kDa

Isotype: IgG1

Purification: Affinity Purified

Species Reactivity: Human

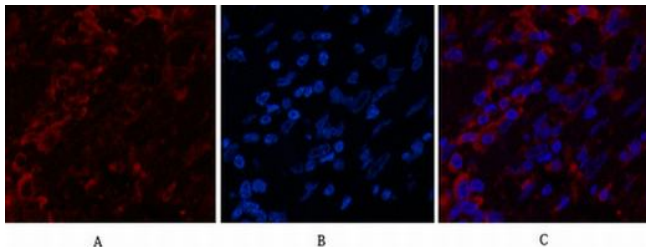
Conjugation: Unconjugated

Modification: Unmodified

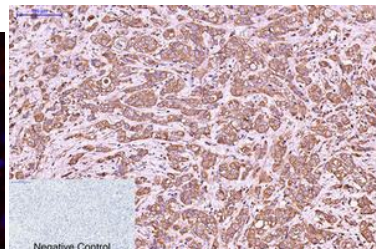
Constituents: PBS (without Mg²⁺ and Ca²⁺), pH 7.3 containing 50% glycerol, 0.5% BSA and 0.02% sodium azide

Research Areas: Signal Transduction

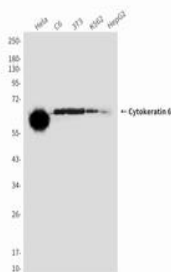
Storage & Shipping: Store at -20°C. Avoid repeated freezing and thawing



Immunofluorescence analysis of Cytokeratin 6 (1A5) in Human breastcancer tissue using Cytokeratin 6 (1A5) antibody (red), and DAPI (blue).



Immunohistochemistry analysis of paraffin-embedded Human breastcancer tissue using Cytokeratin 6 (1A5) antibody. High-pressure and temperature Sodium Citrate pH 6.0 was used for antigen retrieval. Negative control was used by secondary antibody only.



Western blot analysis of Cytokeratin 6 (1A5) in HeLa, C6, 3T3, K562, HepG2 lysates using Cytokeratin 6 (1A5) antibody