

CYTOKERATIN RABBIT PAB

Cat.#: N225216

Product Name: Anti-Cytokeratin Rabbit pAb

Synonyms: KRT2A; KRT2E; KRT2B; KRT2P; K6A; KRT6D; K6B; KRTL1; KRT6E; K6IRS1; KB34; KRT6IRS1; K6IRS2; KB35; KRT6; KRT6IRS2; K6IRS3; KB36; KRT6IRS3; K6IRS4; KB37; KRT5C; KRT6IRS4; K6HF; KB18; K6L; KB38; KRT6L; SCL; CYK8; KRTHB4

UNIPROT

ID: P35908/Q01546/P12035/P13647/P02538/P04259/P48668/Q3SY84/Q14CN4/Q86Y46/Q7RTS7/O95678/Q5XKE5/P08729/P05787/Q9NSB2

Background: Probably contributes to terminal cornification. Associated with keratinocyte activation, proliferation and keratinization.

Immunogen: Synthetic peptide from human protein at AA range: 150-220

Applications: WB,ELISA

Recommended Dilutions: WB: 1/500-1/1000 ELISA: 1/10000

Host Species: Rabbit

Clonality: Rabbit Polyclonal

Clone ID: -

MW: Calculated MW: 65 kDa; Observed MW: 70 kDa

Isotype: IgG

Purification: Affinity Purified

Species Reactivity: Human,Mouse,Rat

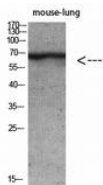
Conjugation: Unconjugated

Modification: Unmodified

Constituents: PBS (without Mg²⁺ and Ca²⁺), pH 7.3 containing 50% glycerol, 0.5% BSA and 0.02% sodium azide

Research Areas: Signal Transduction

Storage & Shipping: Store at -20°C. Avoid repeated freezing and thawing



Western blot analysis of Cytokeratin in mouse lung, mouse brain, mouse kidney, mouse heart lysates using Cytokeratin antibody.