

CYYR1 RABBIT PAB

Cat.#: S219062

Product Name: Anti-CYYR1 Rabbit Polyclonal Antibody

Synonyms: C21orf95

UNIPROT ID: Q96J86 (Gene Accession - BC036761)

Background: The function of this protein is unknown.

Immunogen: Fusion protein of human CYYR1

Applications: ELISA, IHC

Recommended Dilutions: IHC: 50-300; ELISA: 5000-10000

Host Species: Rabbit

Clonality: Rabbit Polyclonal

Isotype: Immunogen-specific rabbit IgG

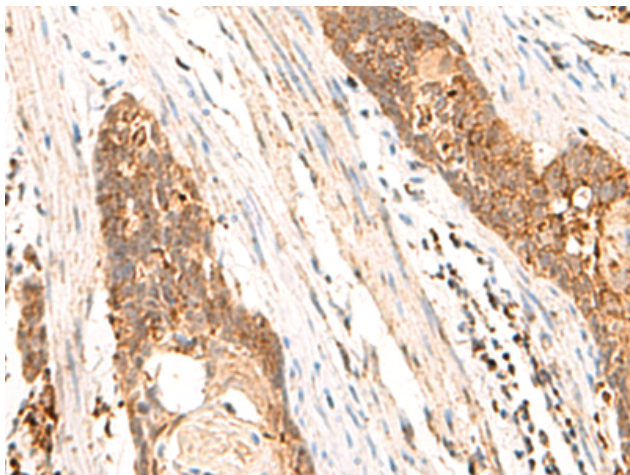
Purification: Antigen affinity purification

Species Reactivity: Human, Mouse

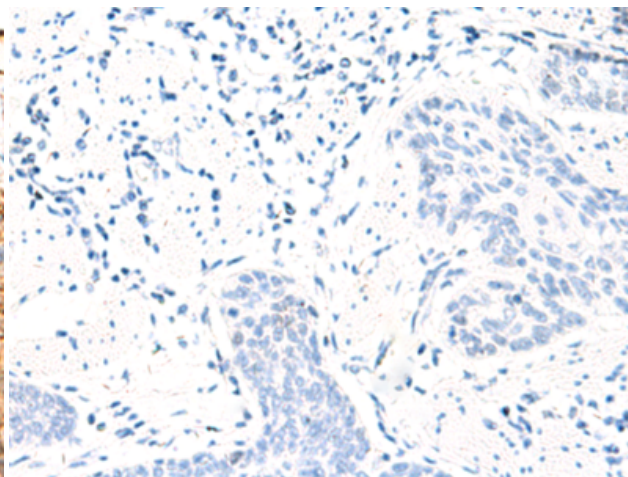
Constituents: PBS (without Mg²⁺ and Ca²⁺), pH 7.4, 150 mM NaCl, 0.05% Sodium Azide and 40% glycerol

Research Areas: Cell Biology

Storage & Shipping: Store at -20°C. Avoid repeated freezing and thawing



Immunohistochemistry analysis of paraffin embedded Human esophagus cancer tissue using 219062(CYYR1 Antibody) at a dilution of 1/85(Cytoplasm).



In comparison with the IHC on the left, the same paraffin-embedded Human esophagus cancer tissue is first treated with the fusion protein and then with 219062(Anti-CYYR1 Antibody) at dilution 1/85.