

## DAB2 RABBIT MAB

**Cat.#:** N263296

**Product Name:** Anti-DAB2 Rabbit Monoclonal Antibody

**Synonyms:** DOC2; DOC-2

**UNIPROT ID:** P98082

**Background:** This gene encodes a mitogen-responsive phosphoprotein. It is expressed in normal ovarian epithelial cells, but is down-regulated or absent from ovarian carcinoma cell lines, suggesting its role as a tumor suppressor. This protein binds to the SH3 domains of GRB2, an adaptor protein that couples tyrosine kinase receptors to SOS (a guanine nucleotide exchange factor for Ras), via its C-terminal proline-rich sequences, and may thus modulate growth factor/Ras pathways by competing with SOS for binding to GRB2. Alternatively spliced transcript variants encoding different isoforms have been found for this gene.

**Immunogen:** A synthetic peptide of human DAB2

**Applications:** WB,ICC/IF,IP

**Recommended Dilutions:** WB: 1/500-1/1000 IF: 1/50-1/200 IP: 1/20

**Host Species:** Rabbit

**Clonality:** Rabbit Monoclonal

**Clone ID:** R04-2A1

**MW:** Calculated MW: 82 kDa; Observed MW: 96 kDa

**Isotype:** IgG

**Purification:** Affinity Purified

**Species Reactivity:** Human,Rat

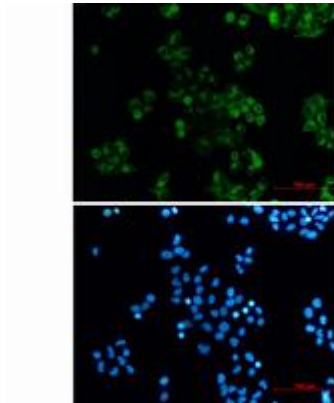
**Conjugation:** Unconjugated

**Modification:** Unmodified

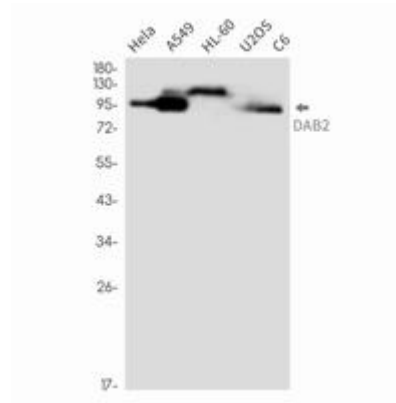
**Constituents:** PBS (without Mg<sup>2+</sup> and Ca<sup>2+</sup>), pH 7.3 containing 50% glycerol, 0.5% BSA and 0.02% sodium azide

**Research Areas:** Signal Transduction

**Storage & Shipping:** Store at -20°C. Avoid repeated freezing and thawing



Immunocytochemistry analysis of DAB2 (green) in HeLa using DAB2 antibody, and DAPI (blue)



Western blot analysis of DAB2 in HeLa, A549, HL-60, U2OS, C6 lysates using DAB2 antibody.